



# FAQs: Security Monitoring with OxBlue

## How can OxBlue help secure my jobsite?

There are three levels of security services to help protect your jobsite.

- **DETECT:** Self-manage after-hours risks with our standard security camera that includes motion detection. When there's movement on site, you'll receive an instant email alert with a time-stamped video clip so you can review and act accordingly.
- **DEFEND:** Use professional security monitoring agents to review the motion alerts and dispatch police.
- **DETER:** Includes all options above plus strobe lights, talk-down capabilities, tamper-proof switches and on-board battery backups.

## How does OxBlue's security monitoring solution work?

Using our live video cameras, motion detection and professional monitoring agents, OxBlue makes it easy to protect the jobsite after-hours.

1. Cameras record jobsite activities
2. Motion detection triggers an email alert
3. Professionals verify if there's a threat and dispatch police
4. Alarms, strobe lights and talk-down communication deter threats

## How does OxBlue prevent false alarms?

OxBlue automatically reduces false alarms using artificial intelligence to screen for specific movement; a tarp flapping in the wind, distant traffic, or a bird flying close by. But with our professional monitoring service agents, alerts are verified before dispatching emergency services.

## Does OxBlue meet the requirements for my Builder's Risk Insurance policy?

Our additional deterrence equipment helps support common Builder's Risk Insurance requirements with strobe light alarms, two-way audio, anti-tamper switches, battery back-ups, live agents and dispatch services. However, requirements vary by provider and location so be sure to review your policy terms closely.

## What are OxBlue's qualifications for security monitoring?

Our call center of professional agents is 5-Diamond certified, the highest accreditation awarded for monitoring. Our agents are UL Certified and members of The Monitoring Association; meaning they meet the requirements for rapid review and response to safeguard your jobsite.

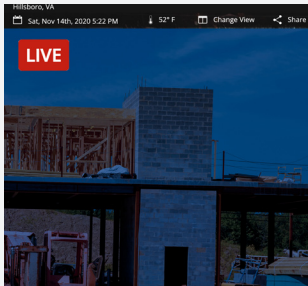
## Is it easy to set and change my security monitoring settings?

You can instantaneously update your settings and monitoring hours through OxBlue's web app that works on any device. Once online, you can view past videos, adjust team access or set sleep timers.

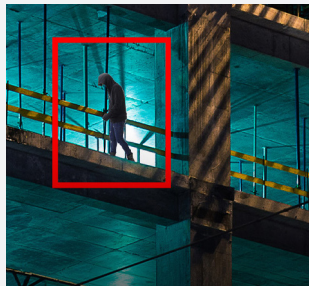
## Can I use solar power for my security camera?

Yes! Motion detection cameras are solar-compatible and include 5-day battery backups to combat bad weather.

## How it Works



**24/7  
Surveillance**



**Motion  
Detection**



**Alert  
Verification**



**Threat  
Deterrence**