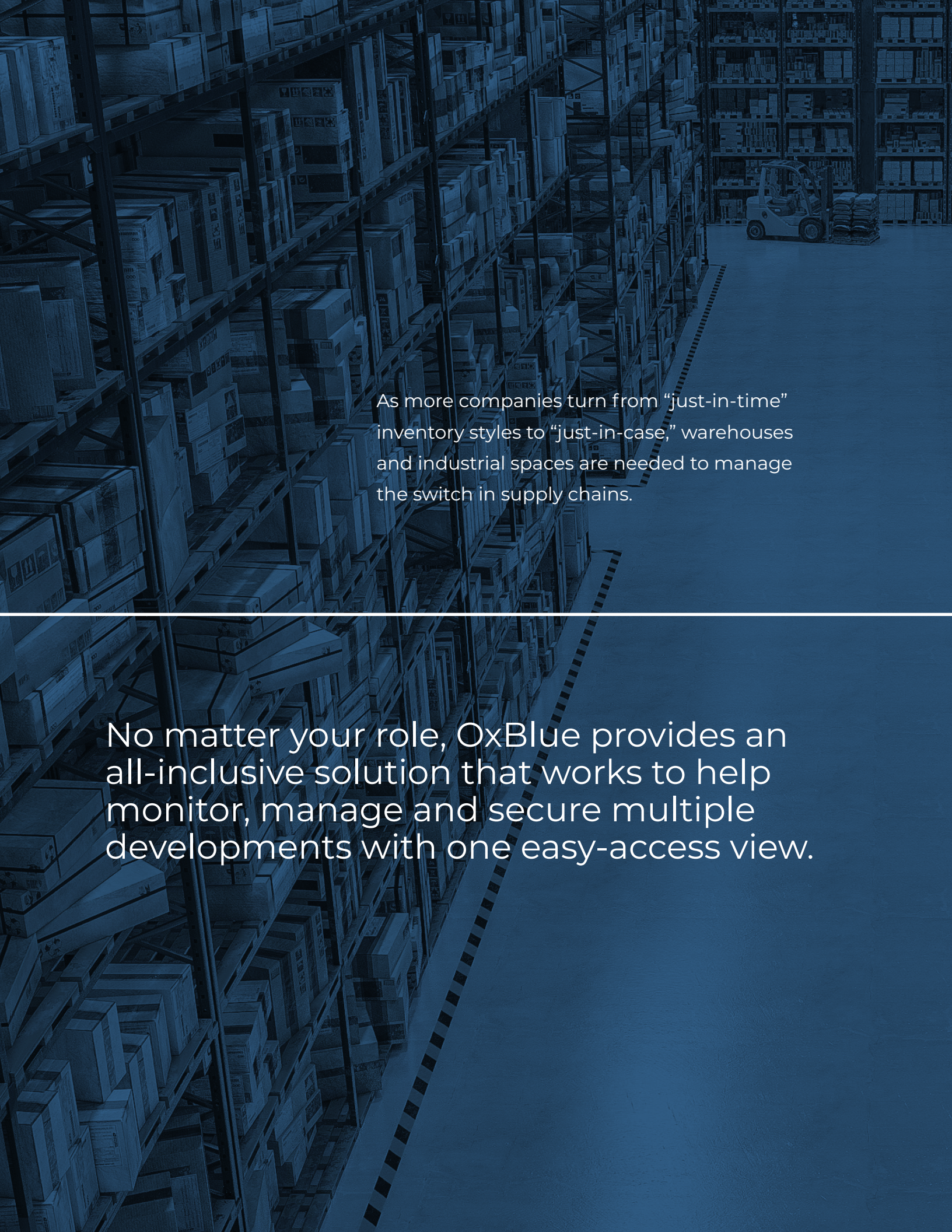




# VISUALIZE

Warehouse projects with ease





As more companies turn from “just-in-time” inventory styles to “just-in-case,” warehouses and industrial spaces are needed to manage the switch in supply chains.

No matter your role, OxBlue provides an all-inclusive solution that works to help monitor, manage and secure multiple developments with one easy-access view.

Buyers need on-demand visibility to ensure these critical supply chain buildings are up to brand standards. General contractors need an easier way to forecast schedule changes and pivot as needed. Developers need security options to prevent losses and quickly turn over these new builds to new partners.





Access industrial construction projects on demand

“The cameras were essential for us since the owner was remote throughout the build.”

— Oliver/Hatcher Construction

# DEVELOP

OxBlue cameras capture clear visual data that helps you manage, secure, document and market your jobsites. From dirt to delivery, you'll have a system that helps with project oversight, resource management, business development and beyond.





Warehouse



Distribution Center



Last-Mile Locations



Reconfiguration

## Construction Cameras That Work For Every Type of Company

OxBlue, part of Hexagon, is a leading global provider of construction time-lapse and live streaming video camera services. Founded in 2001 and based in Atlanta, Georgia, OxBlue has been present on nearly 30,000 job sites and worked with more than 5,900 clients across all industries.

## Flexible Billing For Every Project Type

### ALL INCLUSIVE LEASES



#### Prepay Lease

*Most competitive rental pricing*

Pay upfront and lock in rates for a minimum term of service



#### Monthly Lease

Lock in rate for a minimum term of service



#### Custom Lease

Bulk discounting and unique leasing based on volume

### PURCHASING OPTIONS



#### Prorated

Pay for what you use per month



#### Contract

Lock in rates for a minimum term of service



#### Prepay Lease

*Most competitive service pricing*

Pay upfront and lock in rates for a minimum term of service



Trusted by industry leaders across all markets





Generate results no matter the project with construction cameras

Every project requires three fundamental components to build success:

- Clear communication
- Visibility on the jobsite
- Efficient resource management

Construction cameras deliver these results by providing real-time visuals and straightforward access to what's happening on site. Images and video make it clear where things are on track or falling behind schedule, helping determine if a site visit is necessary.

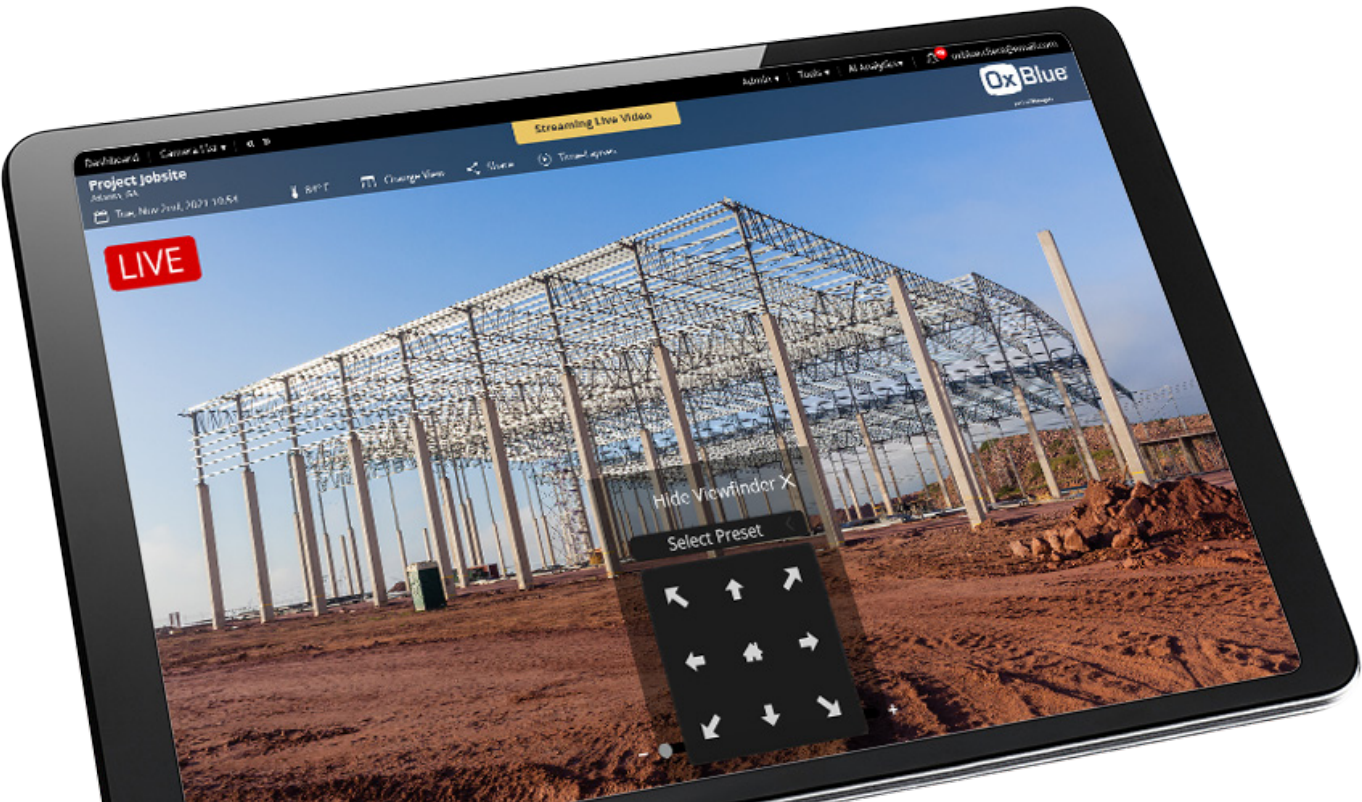
# MANAGE

“By viewing the job site in real time, we can verify work in place, identify any performance issues, and have more visibility to things we could possibly do differently.”

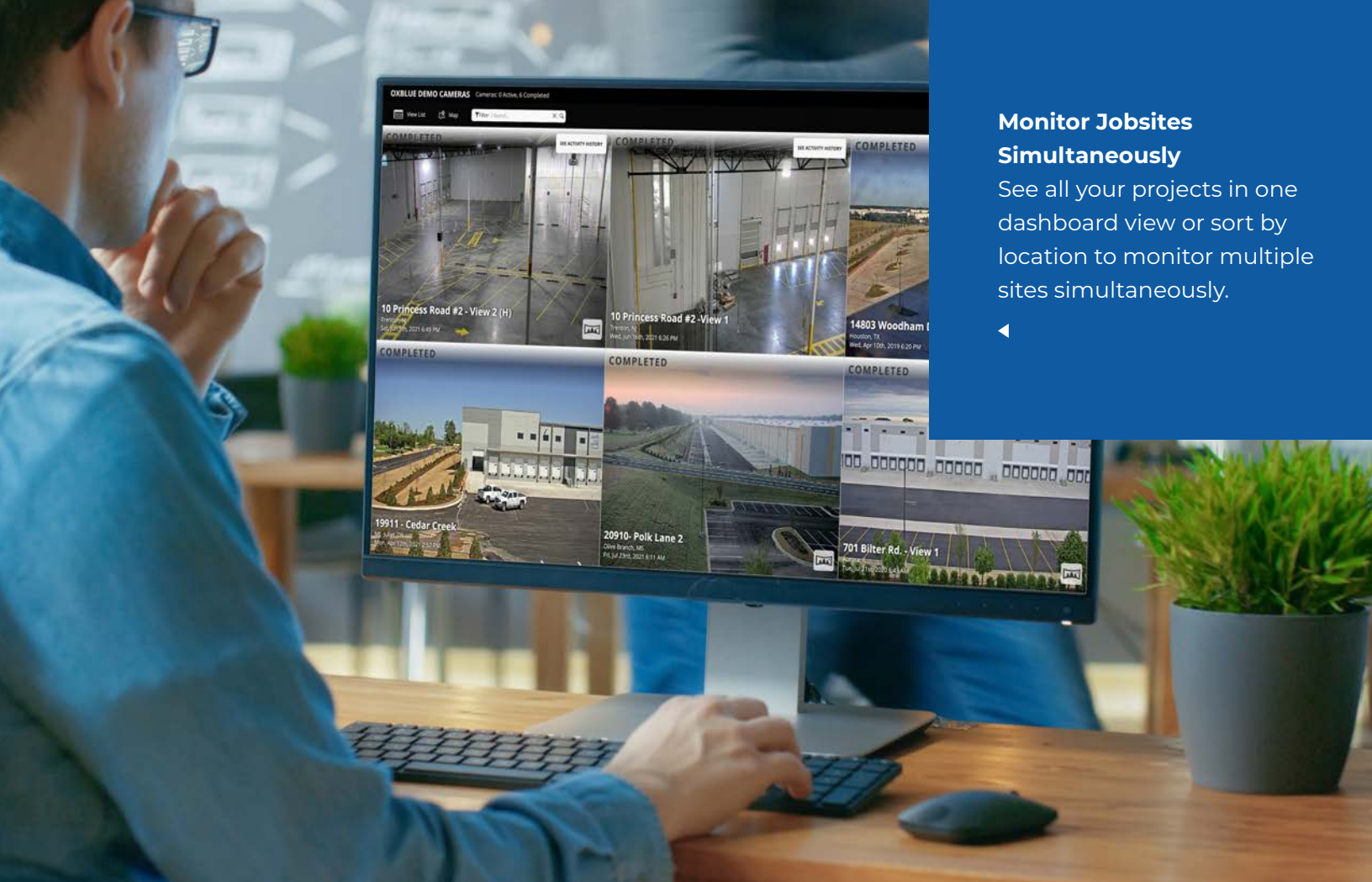
— RaceTrac

With the OxBlue Interface, it's easy to increase communication with one-click sharing features, remote access to the jobsite and user controls that allow for a closer look.

At the same time, OxBlue construction cameras include features that can help standardize points of data. Using the advanced capabilities of the camera, it's easy to detail performance in new ways. Weekly Activity Analysis can show who routinely sticks to schedule and premium analytics can emphasize a team's ability to adjust to unexpected interruptions. All of this important information gives a detailed look at what's been done and what clients can expect to see.







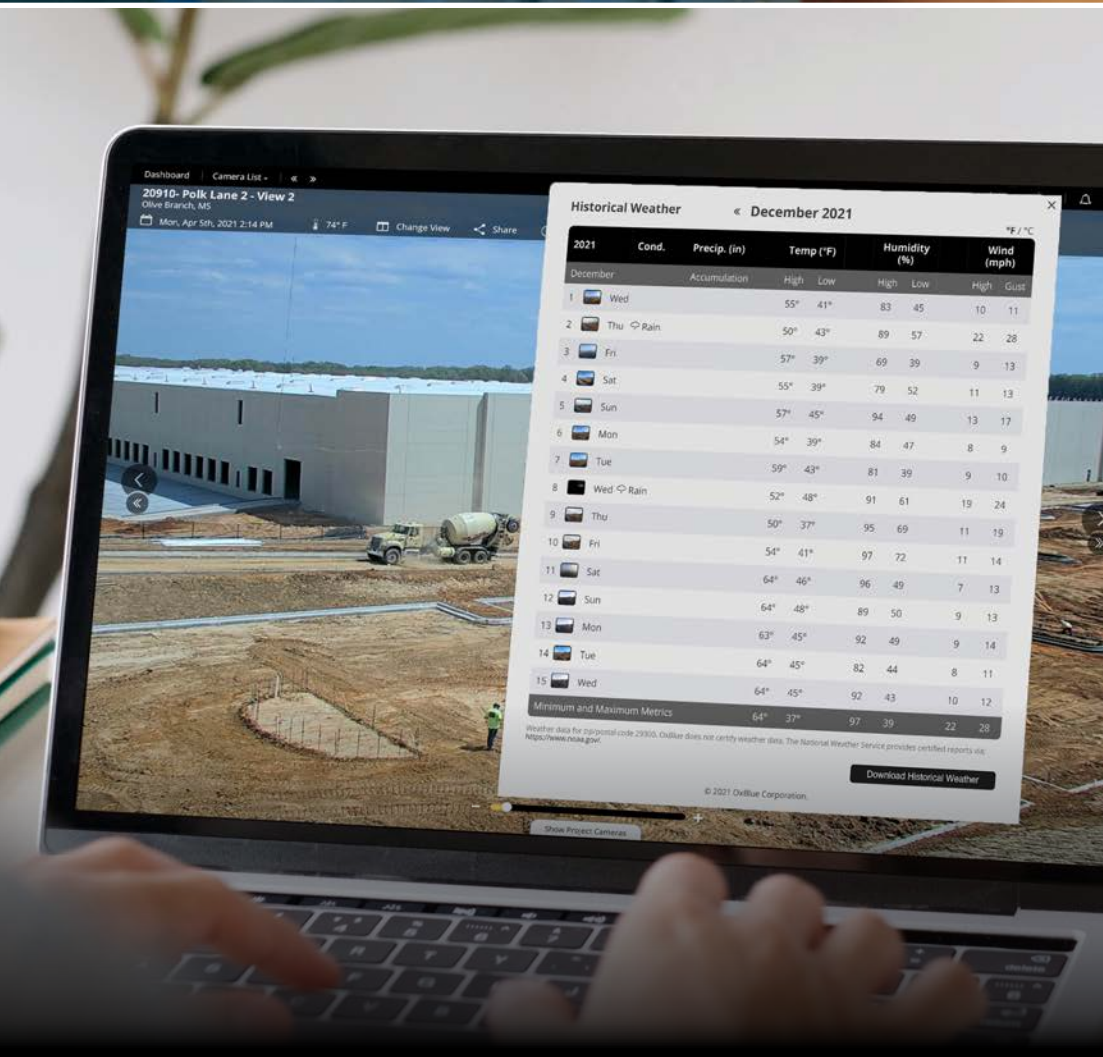
### Monitor Jobsites Simultaneously

See all your projects in one dashboard view or sort by location to monitor multiple sites simultaneously.



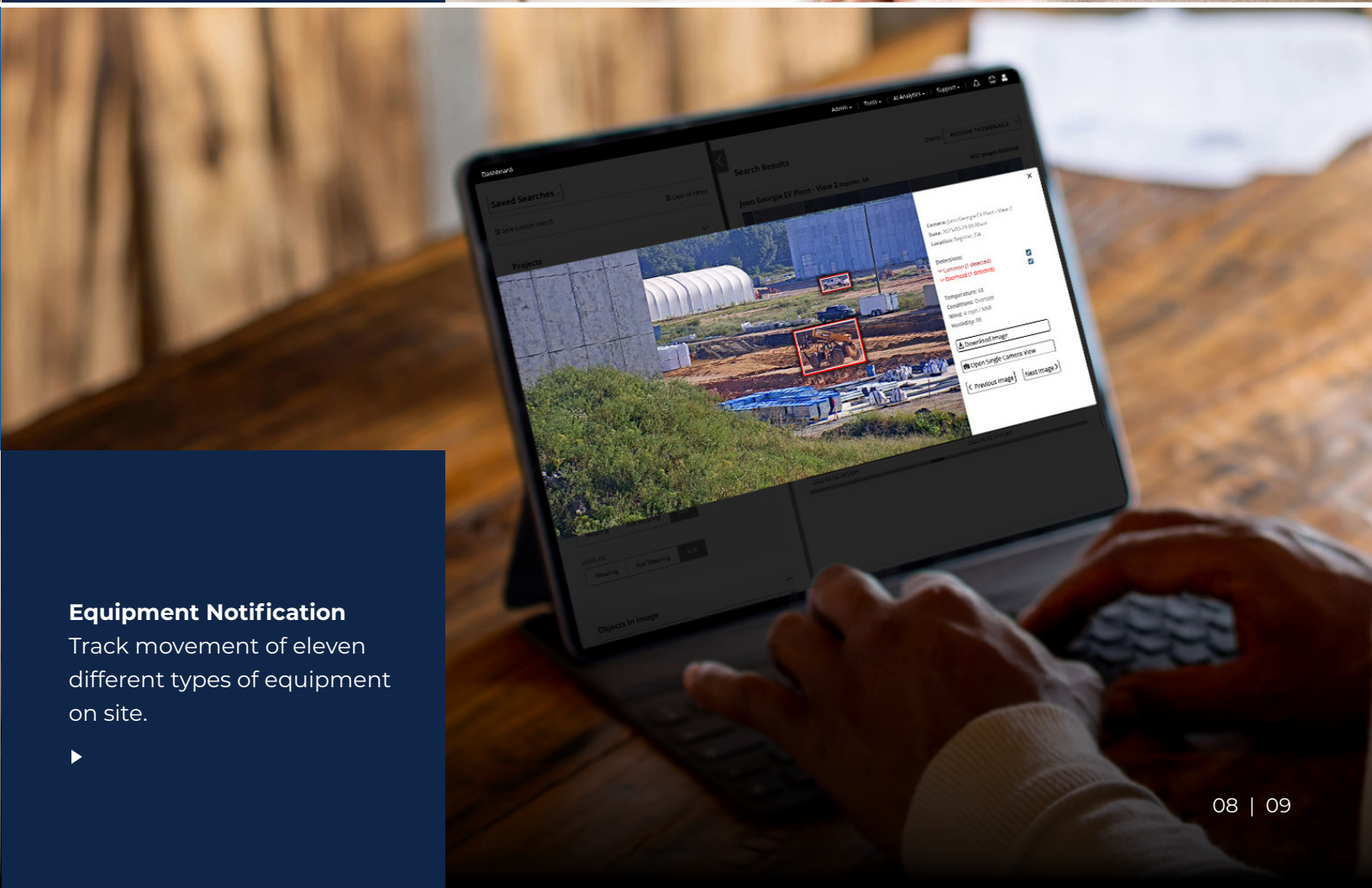
### Schedule Updates

Define a schedule to routinely send images and/or time-lapse videos to yourself or others.



### Monitor Weather Impact

Quickly see if weather conditions have impacted progress or performance with a grid that highlights precipitation, humidity, wind and temperatures.



### Equipment Notification

Track movement of eleven different types of equipment on site.







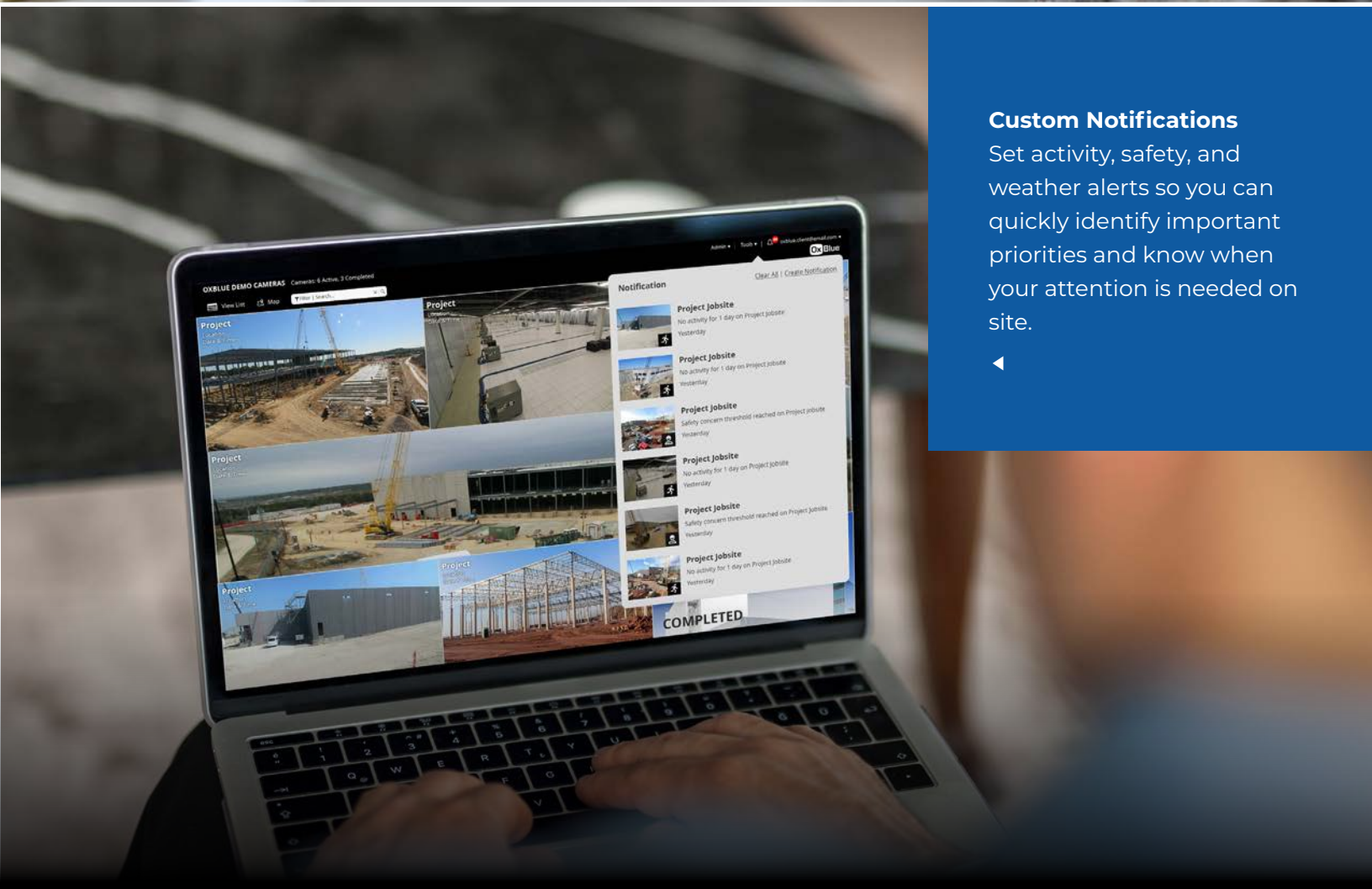
**Activity Analysis**

Compare jobsite activity with weather events to ensure teams are maintaining schedules and working at peak performance levels.



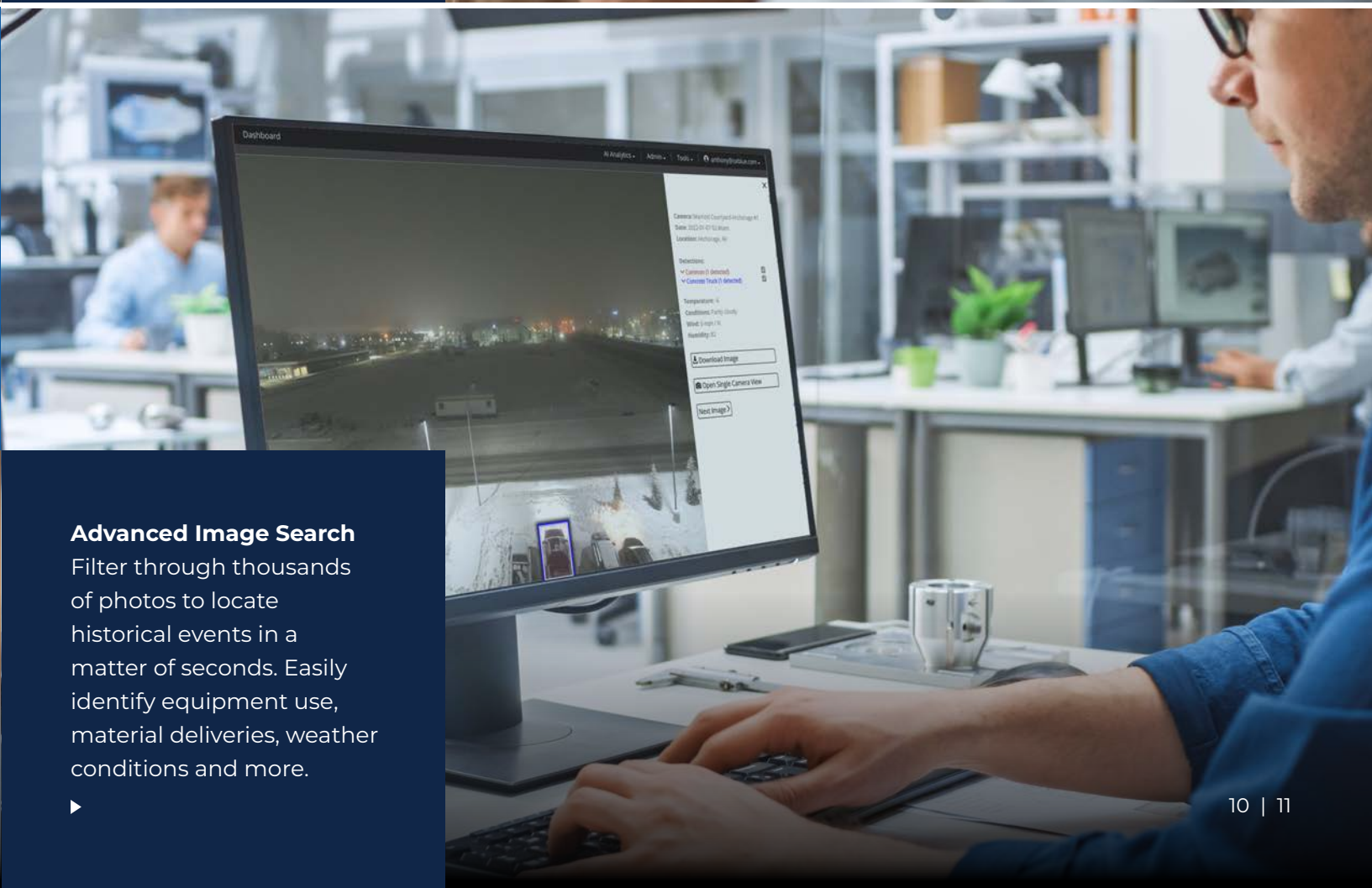
**Safety Tracking**

Watch the jobsite in real-time and ensure safety compliance levels across projects. OxBlue's AI looks for standard PPE compliance and highlights potential issues.



**Custom Notifications**

Set activity, safety, and weather alerts so you can quickly identify important priorities and know when your attention is needed on site.



**Advanced Image Search**

Filter through thousands of photos to locate historical events in a matter of seconds. Easily identify equipment use, material deliveries, weather conditions and more.





Safeguard your projects with security monitoring

Reduce risk, combat theft and prevent damages outside normal working hours using OxBlue's security cameras. 24/7 streaming, custom motion detection, automatic documentation and an optional security service helps defend your jobsite from threats.

# SECURE

"We were able to use the footage from our OxBlue camera to see what time a break-in happened and capture the make, model and license plate of the car involved."

— Peachtree Hotel Group





**Motion Detection**

Monitor risk after-hours with Sapphire cameras that use motion detection to automatically alert you to any activity on site with time-stamped video.



**Professional Live Monitoring**

Add trained agents to review motion alerts and dispatch police if needed.

- UL Certified
- Five Diamond Certified
- TMA Member
- USA-Based Support
- Monthly service charge





Understand your jobsite in-depth with dynamic visuals

On any given day, project managers and general contractors have a list filled with tasks and small details — taking time and attention away from project priorities.

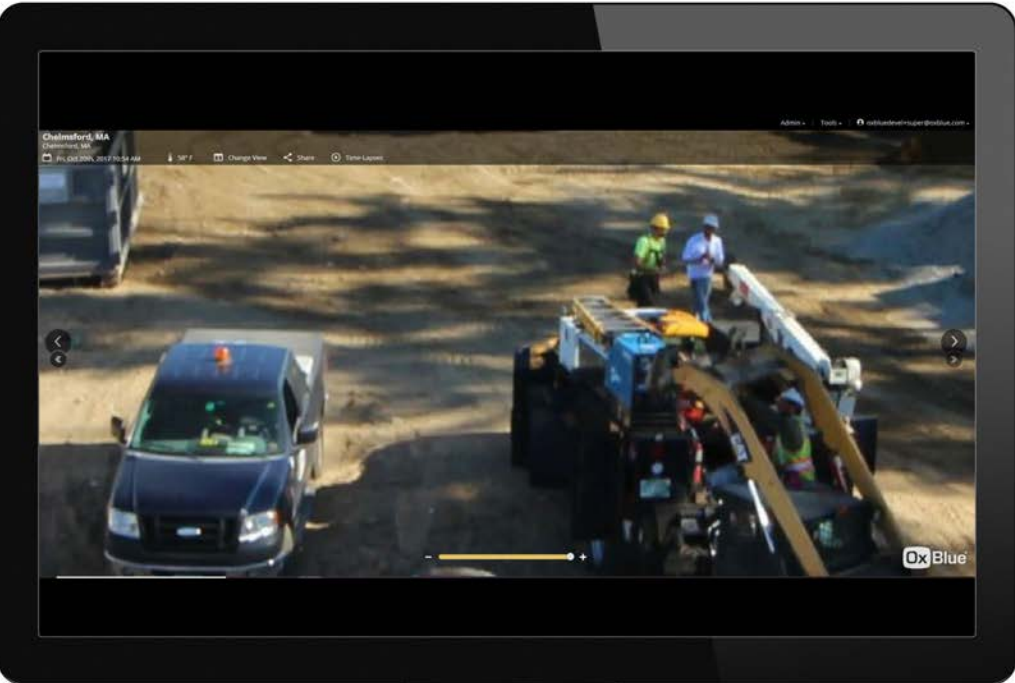
OxBlue offers an easy way to take control of the jobsite with our advanced construction cameras and visual documentation services. What's captured by a construction camera is a clear, unbiased history of what happens in a day.

“Even though the project was 100 miles away, we were always able to pull up the interface, see what was going on and easily catch up on the latest progress.”

— Lumar Devco, LLC

# DOCUMENT

Our time-lapse features and activity analysis serve up key information about the jobsite — detailing an entire day of work in just 30 seconds. The visual record makes it easy to review progress, validate work hours and detect issues that could impact the project.







Compare multiple jobsites' activity, progress and weather conditions the way you want to



Overlay view

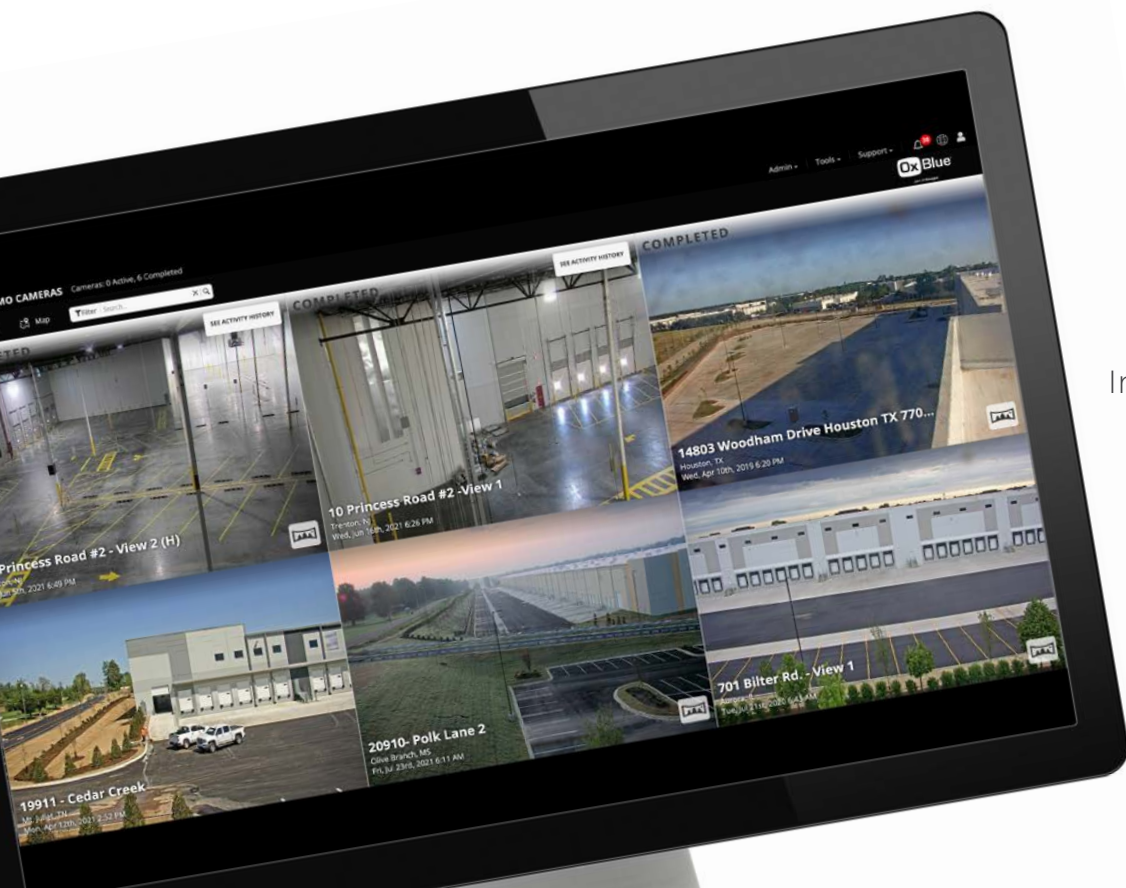


Image gallery view



**Compare Images**  
Access images taken from any point during construction and use different views to clearly mark milestones and day-to-day changes.

**Mark Up Images**  
Highlight specific areas of the jobsite with mark up tools that let you add text, draw, point to or circle details





Showcase your work and strengthen your bidding process

There's more behind the build than just the finished product.

Showing the full story of a successful project means highlighting not only progress, but the data used to outperform the competition. Construction cameras document the details so professionals can visually share results.

# MARKET

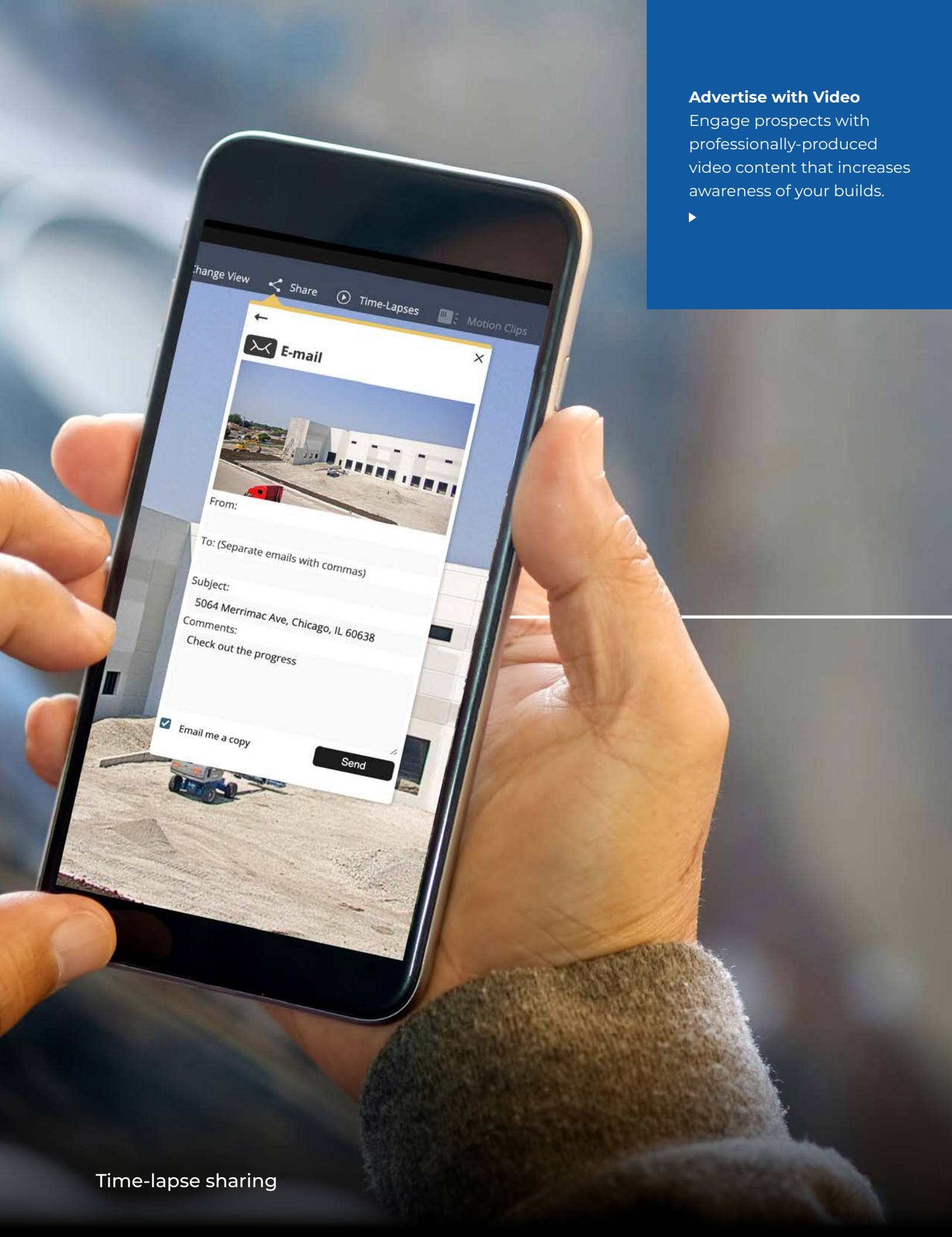
“It was everything we expected for our project ... we are very satisfied with the results.”

— Homewood Flossmoor High School



Time-lapse features are powerful marketing tools that share months worth of activity in a beautifully-edited cinematic format. This short video content can capture the attention of an audience on social media, websites and in proposals. It shows the extent of work done on the project and the dramatic results.

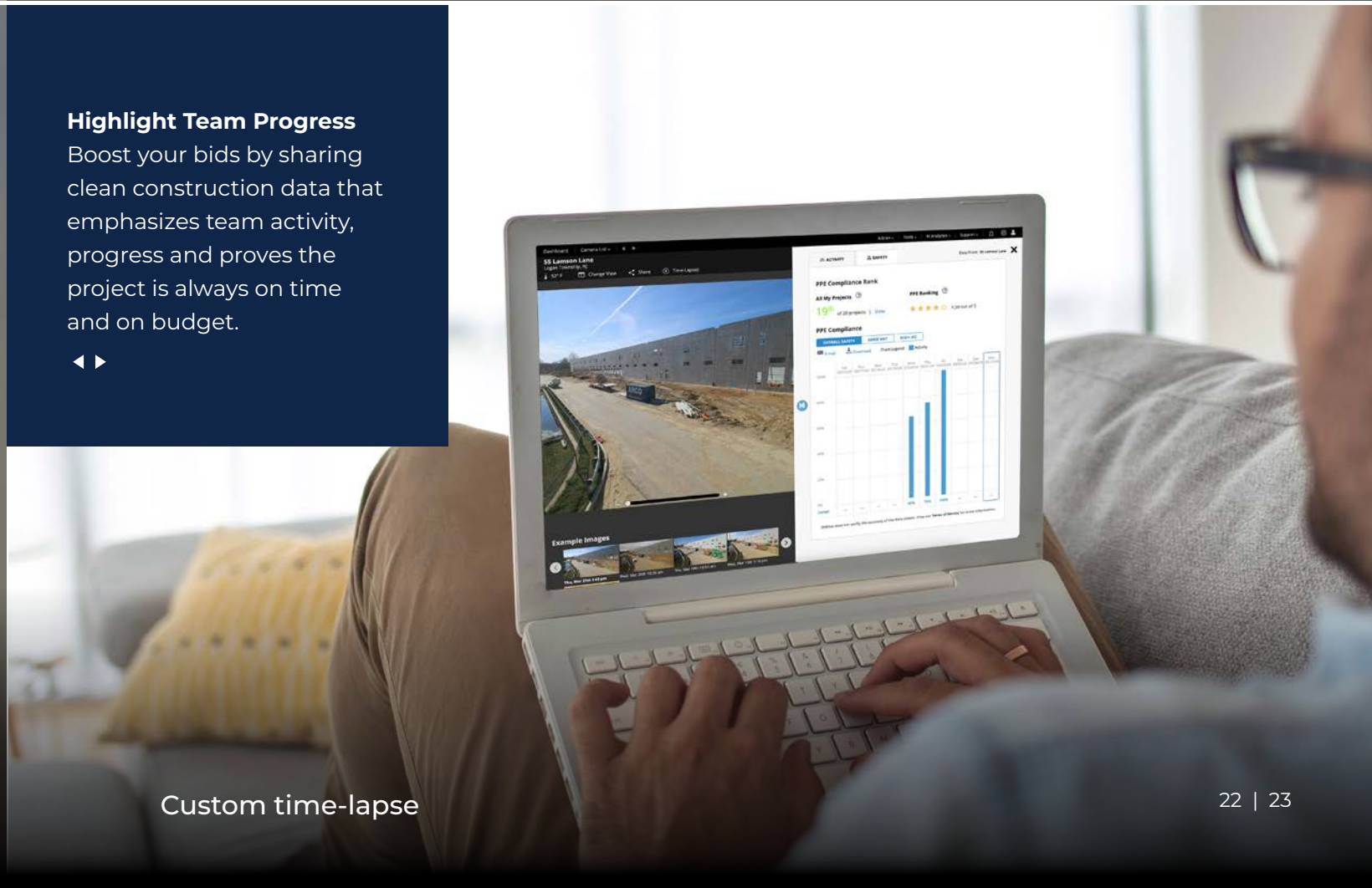




**Advertise with Video**  
Engage prospects with professionally-produced video content that increases awareness of your builds.



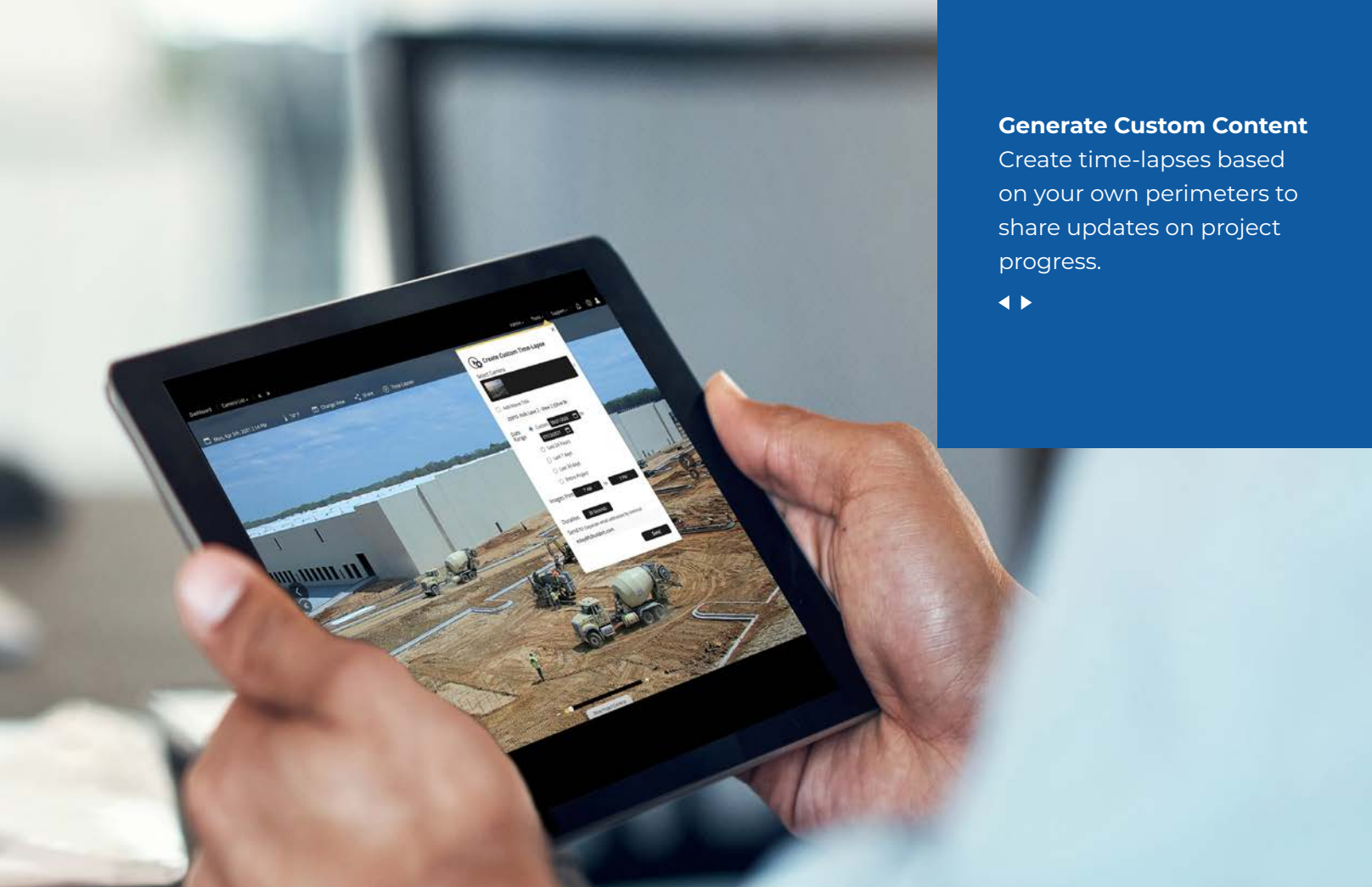
**Highlight Team Progress**  
Boost your bids by sharing clean construction data that emphasizes team activity, progress and proves the project is always on time and on budget.



Time-lapse sharing

Custom time-lapse

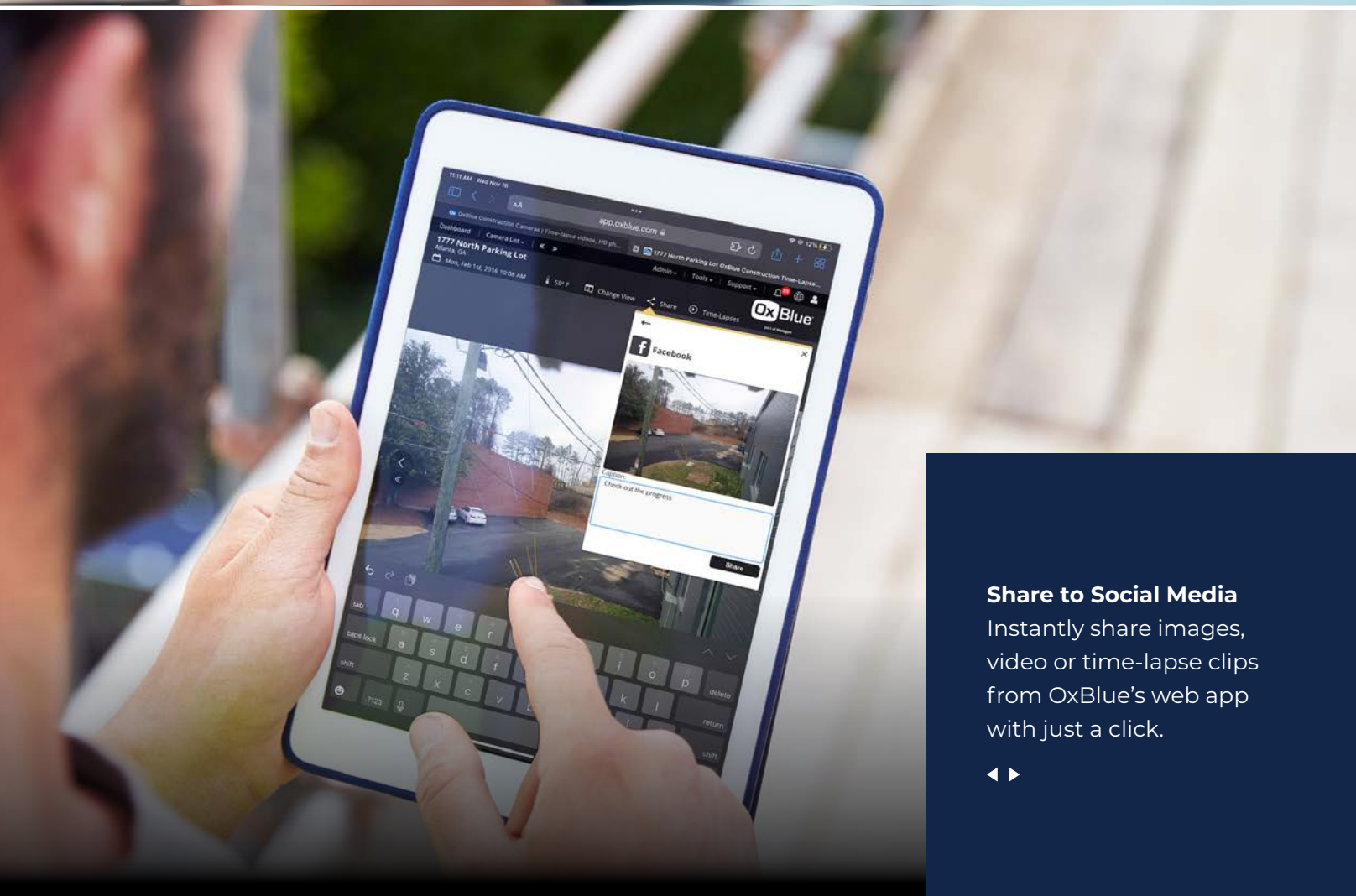




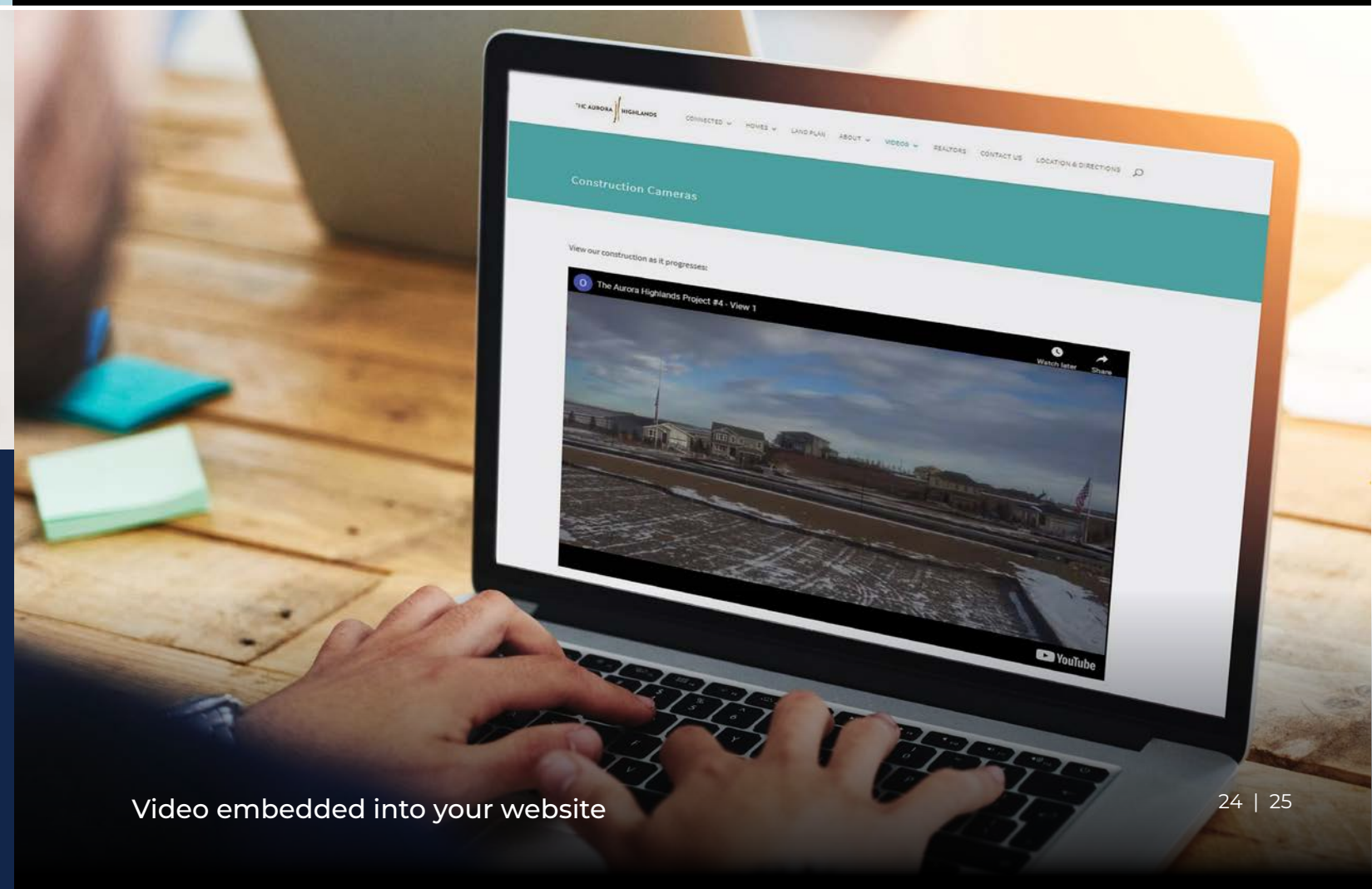
**Generate Custom Content**  
Create time-lapses based on your own perimeters to share updates on project progress.



Live streaming jobsite video



**Share to Social Media**  
Instantly share images, video or time-lapse clips from OxBBlue's web app with just a click.



Video embedded into your website





# VISUALIZE

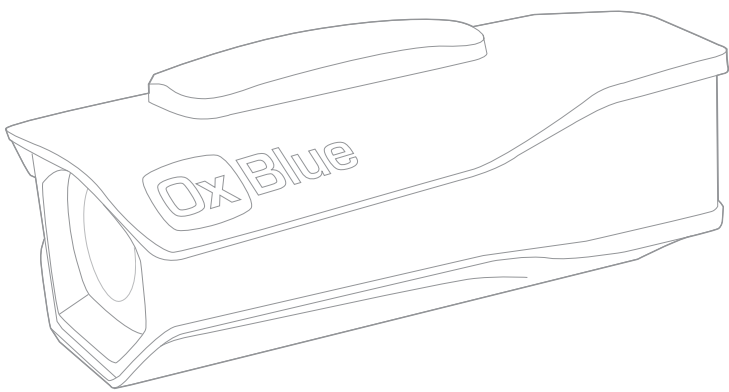
## Your Job in Plain Sight

Open a new realm of understanding into your jobsite with OxBlue's powerful time-lapse and visual data camera systems.





“We can clearly see what floor the project’s on, what’s complete – you get a much better feel for what’s happening on the jobsite.”  
— KDC



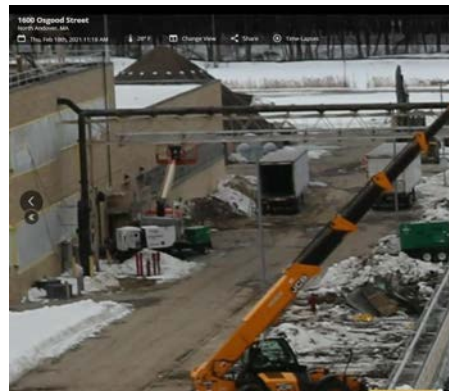
# COBALT

Capture high-resolution still images of your jobsite with construction time-lapse cameras that provide detail and insight into your project.

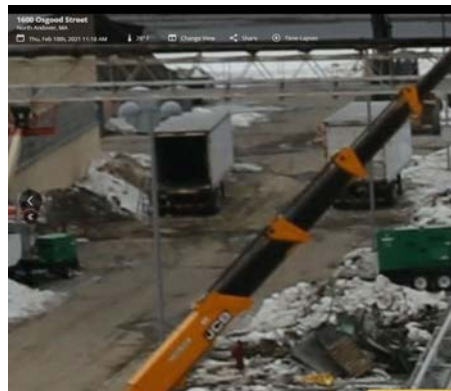
Cobalt cameras are available in 8, 16, 24, and 60 MP models. Consult your rep for the ideal resolution.



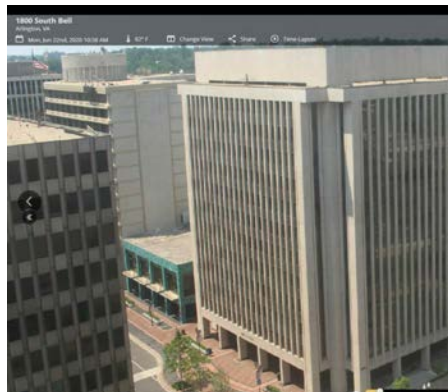
60 MP 400% magnification



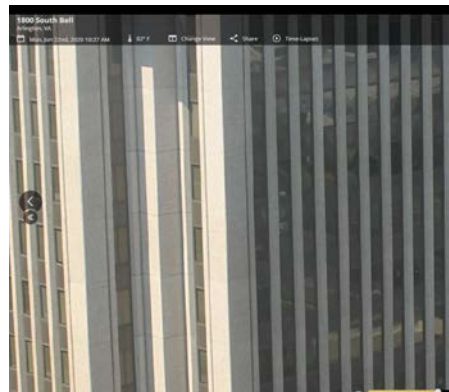
1,040% magnification



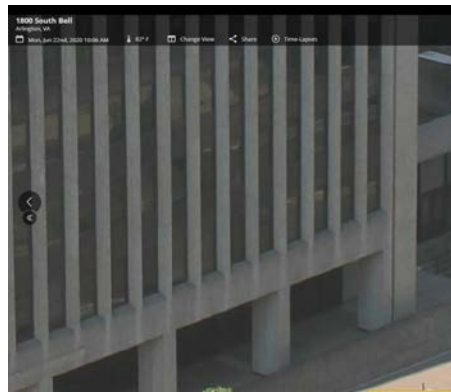
1,640% magnification



24 MP 160% magnification



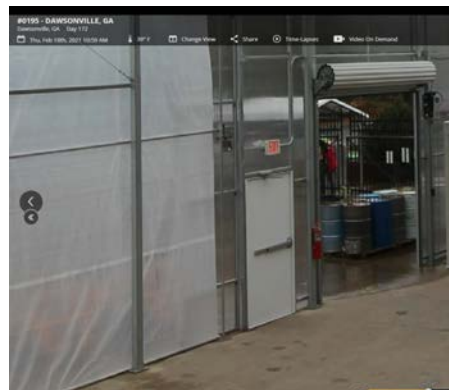
400% magnification



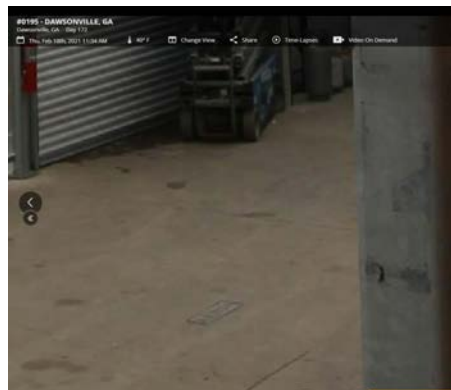
620% magnification



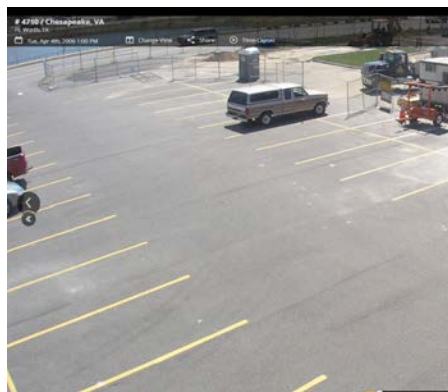
16 MP 160% magnification



400% magnification



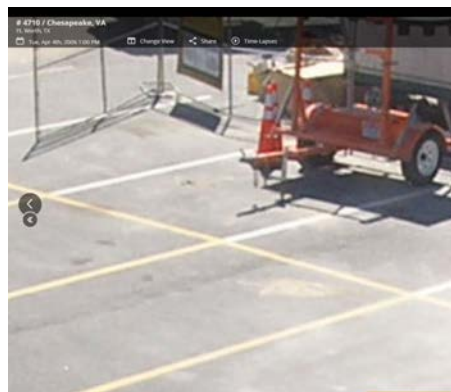
700% magnification



8 MP 160% magnification

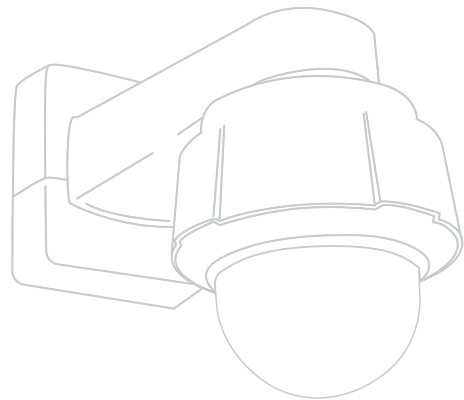


400% magnification



700% magnification





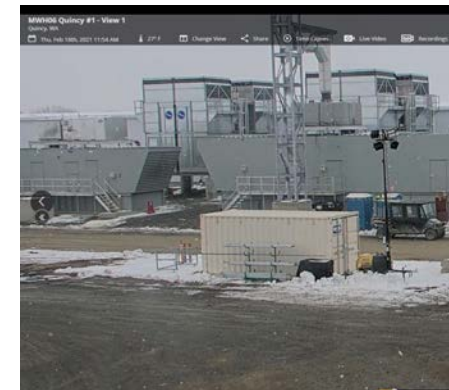
“Roofing is a very dangerous job, so a lot of what we use the camera for is safety. Our managers monitor the images for risks during a project and keep OSHA regulations top of mind.”

— Tremco

# SAPPHIRE

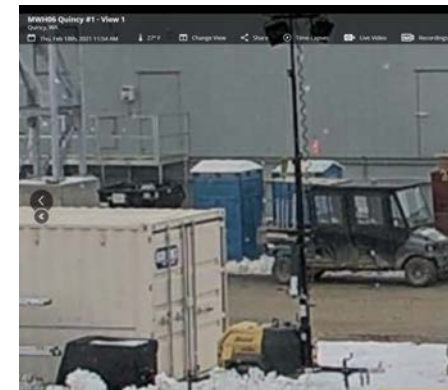
See the life of the jobsite with a video camera that gives you live insights into the status of your project.

Sapphire cameras are available in 8 and 4 MP static and, 8 and 2 MP PTZ models. Consult your rep for the ideal resolution.

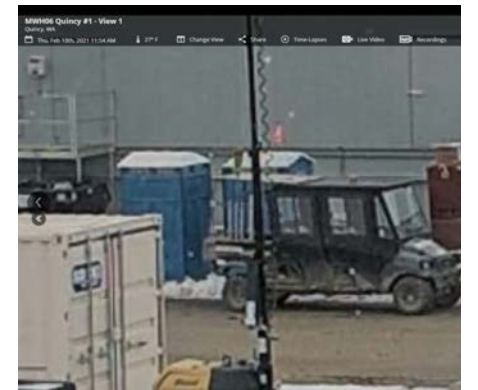


8 MP VPTZ

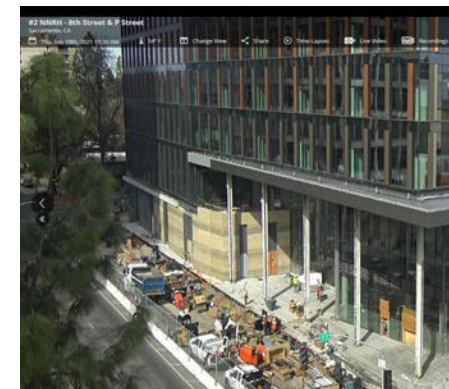
160% magnification



400% magnification

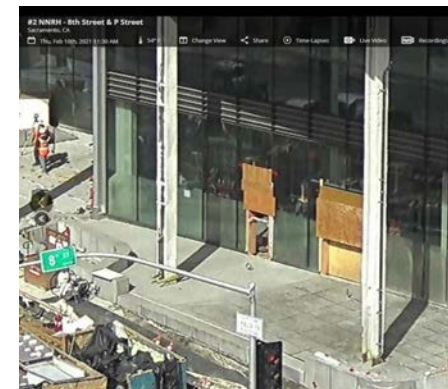


520% magnification

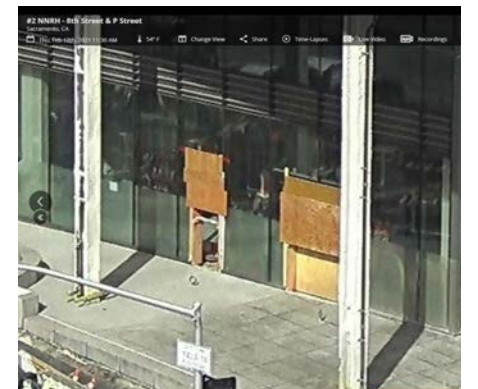


2 MP VPTZ

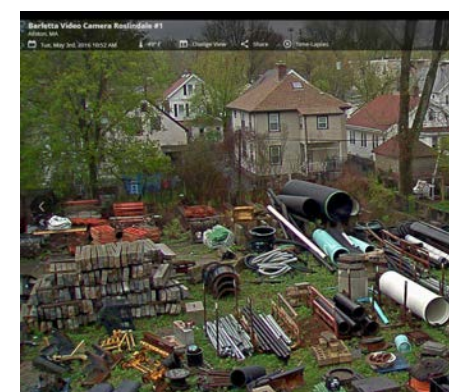
160% magnification



400% magnification

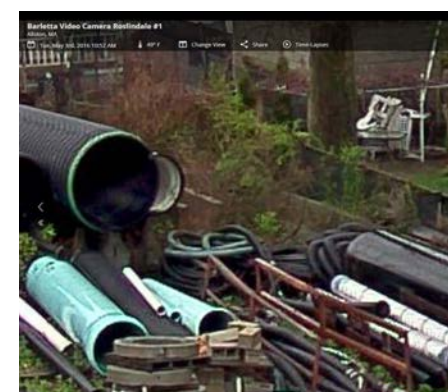


520% magnification



8 MP STATIC

160% magnification

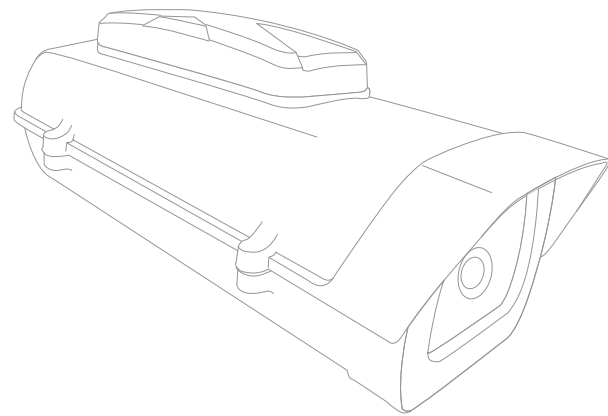


400% magnification



520% magnification





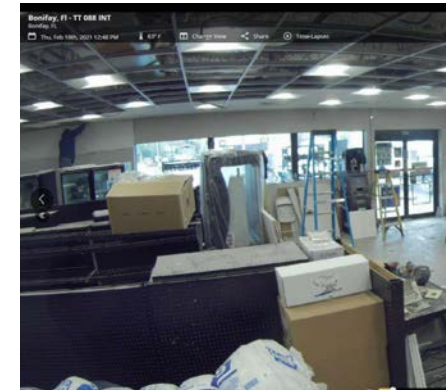
“The OxBlue Team was very responsive, attentive and proactive throughout the entire project. OxBlue operates with professional customer service and has high quality products.”

— Clark Construction

# INDIGO

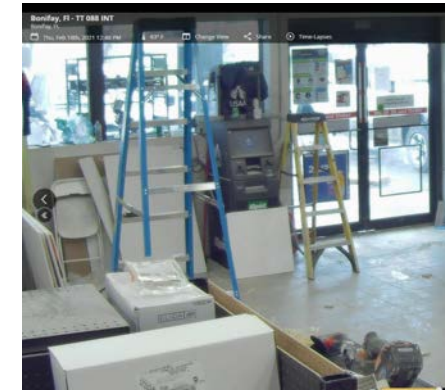
Reduce the need to be on site for your interior projects with an expanded field of view and the ability to pan and zoom within photos.

Indigo cameras are available in 8, 12, and 16 MP models. Consult your rep for the ideal resolution.

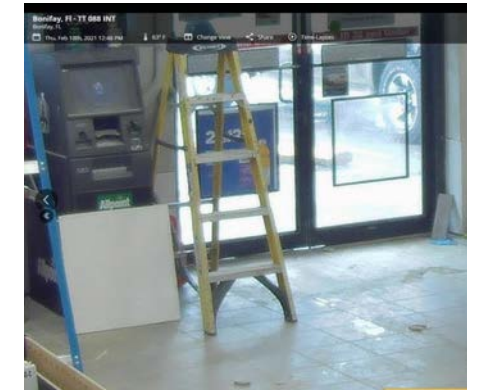


16 MP

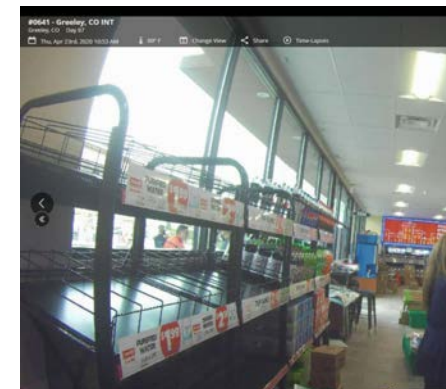
160% magnification



400% magnification

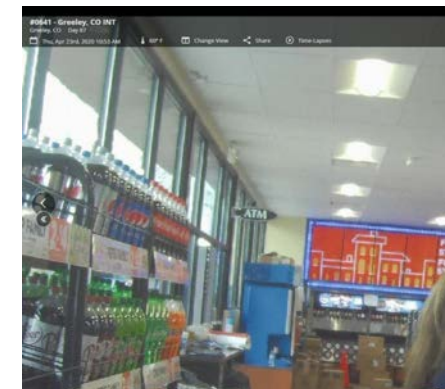


700% magnification

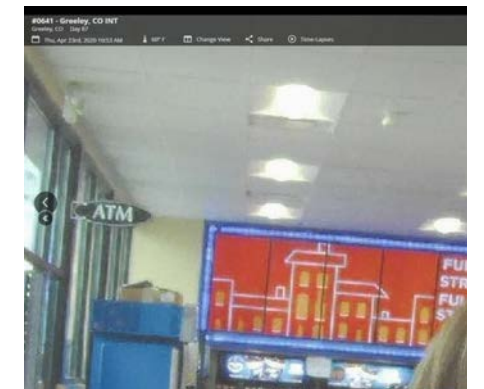


12 MP

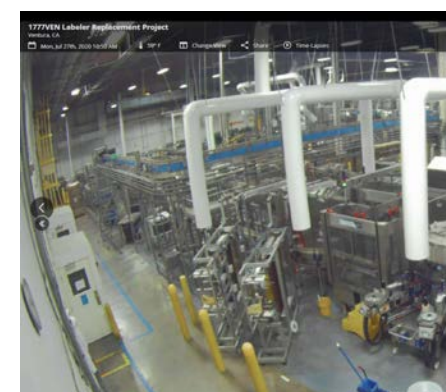
160% magnification



400% magnification



620% magnification

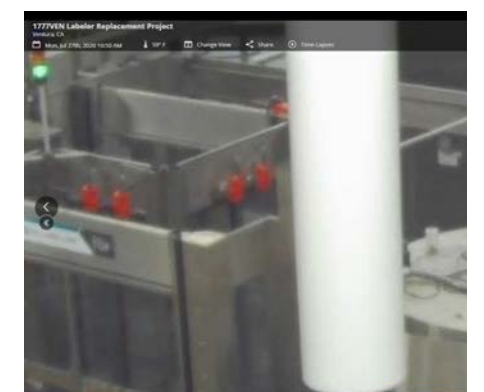


8 MP

160% magnification

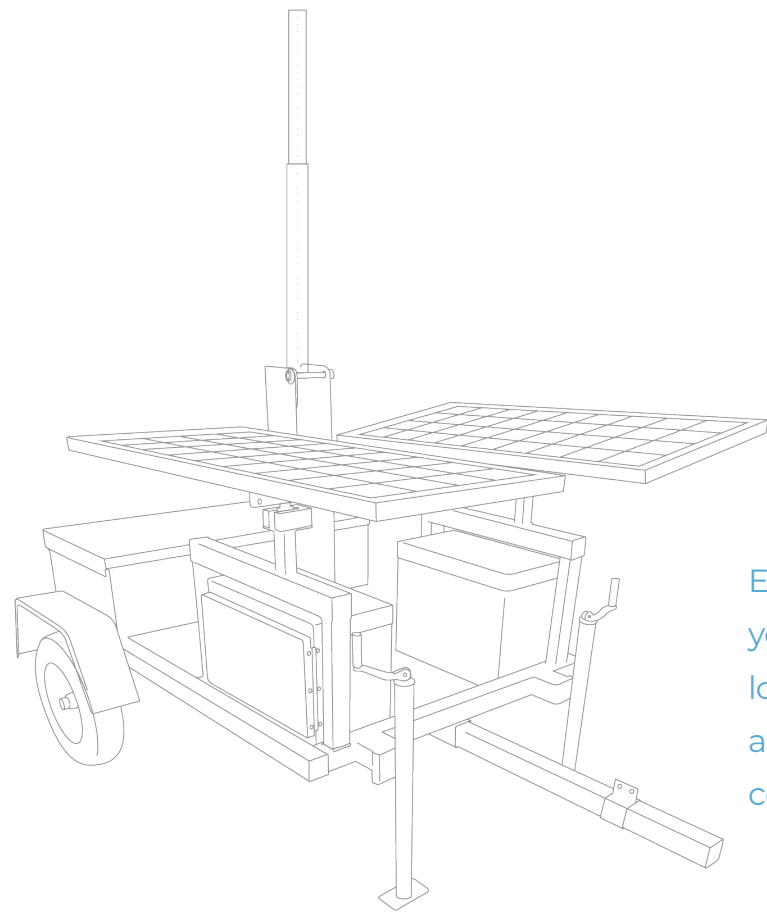


400% magnification



700% magnification





Ensure your camera is always monitoring your project, even in the most remote locations. OxBlue's portable solar trailers and solar power stations are ready to connect you to the jobsite.

# SOLAR

Designed specifically for OxBlue cameras, solar is available in a variety of dimensions based on your needs. All solar options typically qualify for a 30% federal tax credit for renewable energy products.



Solar Station



Solar Trailer



Solar Telescopic Mast



SEE THE STORY BEHIND YOUR JOBSITE WITH OXBLUE