

# SECURITY MONITORING WITH TIME-LAPSES





# WHAT TO ASK YOUR SECURITY CAMERA PROVIDER

Find the best provider and security system for your jobsite. Asking these questions can help you determine what service is best fit for your needs.

## CAPABILITIES

- What are my options when it comes to securing the jobsite?
- Does the camera support 24/7 live streaming and recording?
- Does the camera include motion detection? How far can it detect motion at night?
- How will I know if there is a threat on my jobsite?
- Is it easy for me to adjust monitoring hours on my own?
- Can I select custom areas for monitoring (i.e., prevent the camera from monitoring public areas near the site)?
- Is the camera system tamper-proof?

## INSTALLATION

- Where should I place my cameras for the best coverage?
- Do I need my own lighting?
- What happens if there's no power? Are there backup batteries?
- Are there professional install services available?
- How long does it take to install and activate the system?

- Can I use solar power for my security camera?
- Is this a long-term contract for services?

## QUALIFICATIONS

- How qualified is the security monitoring service? What certifications or memberships do they have?
- What are the average alert review and emergency response times?
- What hardware and services are offered to support Builder's Risk insurance requirements?

## CUSTOMER SUPPORT

- What type of customer service is offered?
- Where is customer support located and what are their hours?
- Will I have a dedicated account manager to assist me?



# FAQs: Security Monitoring with OxBlue

## How can OxBlue help secure my jobsite?

There are three levels of security services to help protect your jobsite.

- **DETECT:** Self-manage after-hours risks with our standard security camera that includes motion detection. When there's movement on site, you'll receive an instant email alert with a time-stamped video clip so you can review and act accordingly.
- **DEFEND:** Use professional security monitoring agents to review the motion alerts and dispatch police.
- **DETER:** Includes all options above plus strobe lights, talk-down capabilities, tamper-proof switches and on-board battery backups.

## How does OxBlue's security monitoring solution work?

Using our live video cameras, motion detection and professional monitoring agents, OxBlue makes it easy to protect the jobsite after-hours.

1. Cameras record jobsite activities
2. Motion detection triggers an email alert
3. Professionals verify if there's a threat and dispatch police
4. Alarms, strobe lights and talk-down communication deter threats

## How does OxBlue prevent false alarms?

OxBlue automatically reduces false alarms using artificial intelligence to screen for specific movement; a tarp flapping in the wind, distant traffic, or a bird flying close by. But with our professional monitoring service agents, alerts are verified before dispatching emergency services.

## Does OxBlue meet the requirements for my Builder's Risk Insurance policy?

Our additional deterrence equipment helps support common Builder's Risk Insurance requirements with strobe light alarms, two-way audio, anti-tamper switches, battery back-ups, live agents and dispatch services. However, requirements vary by provider and location so be sure to review your policy terms closely.

### What are OxBlue's qualifications for security monitoring?

Our call center of professional agents is 5-Diamond certified, the highest accreditation awarded for monitoring. Our agents are UL Certified and members of The Monitoring Association; meaning they meet the requirements for rapid review and response to safeguard your jobsite.

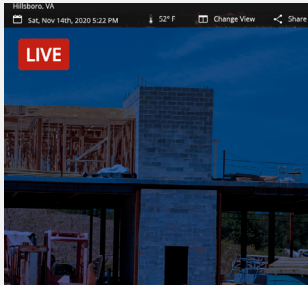
### Is it easy to set and change my security monitoring settings?

You can instantaneously update your settings and monitoring hours through OxBlue's web app that works on any device. Once online, you can view past videos, adjust team access or set sleep timers.

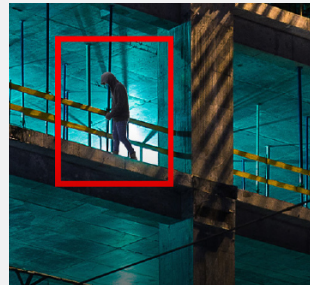
### Can I use solar power for my security camera?

Yes! Motion detection cameras are solar-compatible and include 5-day battery backups to combat bad weather.

## How it Works



**24/7  
Surveillance**



**Motion  
Detection**



**Alert  
Verification**



**Threat  
Deterrence**

[Learn more at OxBlue.com](https://www.oxblue.com)

OxBlue, part of Hexagon, is a leading global provider of construction camera and video services. Since 2001, OxBlue's operated on nearly 30,000 job sites across 45 different countries.