

WHAT TO ASK YOUR SECURITY CAMERA PROVIDER

Find the best provider and security system for your jobsite. Asking these questions can help you determine what service is best fit for your needs.

CAPABILITIES

- What are my options when it comes to securing the jobsite?
- Does the camera include motion detection? How far can it detect motion at night?
- Does the camera support 24/7 live streaming and recording?
- How does the system prevent false alarms?
- Can I review security alerts and footage on any device?
- Is it easy for me to adjust monitoring hours on my own?

INSTALLATION

- Are there professional install services available?
- How long does it take to install and activate the system?
- Can I use solar power for my security camera?
- Is this a long-term contract for services?

QUALIFICATIONS

- Is the provider a member of TMA (The Monitoring Association)?
- What are the average alert review and emergency response times?
- How qualified is the security monitoring service? What certifications do they have?

CUSTOMER SUPPORT

- What type of customer service is offered?
- Where is customer support located and what are their hours?
- Will I have a dedicated account manager to assist me?

Safeguard your projects with security monitoring

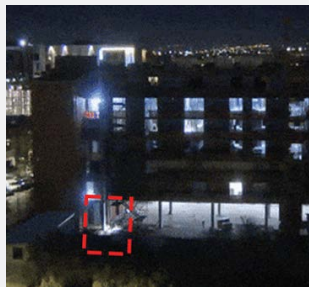
Real-time risk detection and review

Reduce risk, combat theft and prevent damages after-hours through OxBlue's surveillance monitoring service. While all Sapphire video cameras include motion detection that lets you review threats yourself, our optional service acts as a faster, better first line of defense for the jobsite.

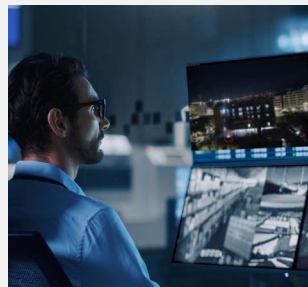
How it Works



Security Monitoring



Motion Detection



Alert Verification



Emergency Notification

Set your security schedule, define follow-up protocols and let certified surveillance operators keep eyes on the jobsite. If motion is detected, monitoring agents will review the alert and evaluate the risk. If there's a true threat, they'll dispatch the police and notify site contacts as determined by your protocol.

Professional Security for Ultimate Visibility

Sapphire Camera Details				Monitoring Service
<ul style="list-style-type: none"> • 2 MP PTZ • 1080P Video • 65° Horizontal Field of View • 39° Vertical Field of View • 30x Optical Zoom 	<ul style="list-style-type: none"> • 8 MP PTZ • 1080P Video • 70° Horizontal Field of View • 43° Vertical Field of View • 12x Optical Zoom 	<ul style="list-style-type: none"> • 4 MP Static • 1080P Video • 130° Horizontal Field of View • 73° Vertical Field of View • IR Illumination up to 50 ft 	<ul style="list-style-type: none"> • 8 MP Static • 4K Video • 109° Horizontal Field of View • 57° Vertical Field of View • 3.5x Optical Zoom • IR Illumination up to 82 ft 	<ul style="list-style-type: none"> • UL Certified • Five Diamond Certified • TMA Member • USA-Based Support
<p>Motion Detection Rental and Purchase Options</p>				<p>\$95 monthly service charge per camera</p>

REQUEST A DEMO