

SOLAR STATION SERIES

OxBlue solar power stations are designed specifically for use with the OxBlue construction cameras, enabling quick and easy setup. As an added bonus, they typically qualify for a 30% federal tax credit for renewable energy products.

Actual specifications vary depending on type of camera and job site location.



Light and easy-to-handle panels & batteries



Constant power to the construction camera



30% federal renewable-energy tax credit



Mobile power all over the jobsite



Simple activation and installation



Digital system display for troubleshooting



SOLAR STATION SERIES
SOLAR STATION SPECIFICATIONS

	Level	Solar Panel Dimensions	Battery Cabinet Dimensions
Leasing Options			
50W Compact System	Lease Level 1	20.08" L, 21.30" W, 10.50" H,	N/A
50W Single Battery System	Lease Level 2	21.30" L, 20.08" W, 1.18" H, 9lb	19.00" L, 15.00" W, 12.00" H, 29lb
65W Single Battery System	Lease Level 3	38.90" L, 21.30" W, 1.38" H, 18lb	19.00" L, 15.00" W, 12.00" H, 29lb
110W Single Battery System	Lease Level 4	45.04" L, 26.38" W, 1.97" H, 22lb	19.00" L, 15.00" W, 12.00" H, 29lb
200W Two Battery System	Lease Level 5	61.42" L, 28.15" W, 1.38" H, 30lb	24.00" L, 15.00" W, 16.00" H, 32lb
220W Two Battery System	Lease Level 6	45.04" L, 52.76" W, 1.97" H, 44lb	24.00" L, 15.00" W, 16.00" H, 32lb
Purchaing Options			
65W Single Battery System	Purchase Level 2	30.31" L, 18.90" W, 1.38" H, 14lb	19.00" L, 15.00" W, 12.00" H, 29lb
130W Single Battery System	Purchase Level 3	34.84" L, 30.31" W, 1.38" H, 22lb	24.00" L, 15.00" W, 16.00" H, 29lb
200W Two Battery System	Purchase Level 4	61.42" L, 28.15" W, 1.38" H, 30lb	24.00" L, 15.00" W, 16.00" H, 32lb
260W Two Battery System	Purchase Level 5	34.84" L, 60.62" W, 1.38" H, 44lb	24.00" L, 15.00" W, 16.00" H, 32lb
400W Two Battery System	Purchase Level 6	61.42" L, 56.30" W, 1.38" H, 60lb	24.00" L, 15.00" W, 16.00" H, 32lb
Cable Length		Warranty	
30 ft (9.14 m) standard from camera to cabinet; up to 75 ft (22.86 m) available		System: 2 year	
Power Connection			
12V DC			

Every self-contained OxBlue construction camera comes ready to meet your job site monitoring needs right out of the box. No need for additional hardware or software — or jobsite internet connection.

SOLAR TRAILER SERIES

Move your camera to any location on your job site and never worry about losing power with the OxBlue solar trailer.

Light and easy-to-handle panels & batteries



Constant power to the construction camera



30% federal renewable-energy tax credit



Rugged & portable power for the entire site



Simple activation and installation



Digital system display for troubleshooting



Solar Trailer Dimensions

11.50' L (3.50 m)

6.00' W (1.80 m)

6.67' H (2.03 m)

Mast Height

Up to 30 ft (9.19 m)

Construction

Frame: Steel with two-coat automotive paint

Lockable cabinet: weatherproof aluminium

Solar Panel Dimensions

54.00" L (40.64 cm)

26.00" W (66.04 cm)

2.00" H (3.81 cm)

Solar Panel Wattage

400 Watt (Legacy model 260w to 520w)

Weight

1400 lb (635.03 kg)

30FT SOLAR CRANK-UP TELESCOPIC MAST

Enjoy the visibility and stability of a telephone pole with the flexibility of a trailer using the Telescopic Crank Mast.

Light and easy-to-handle panels & batteries



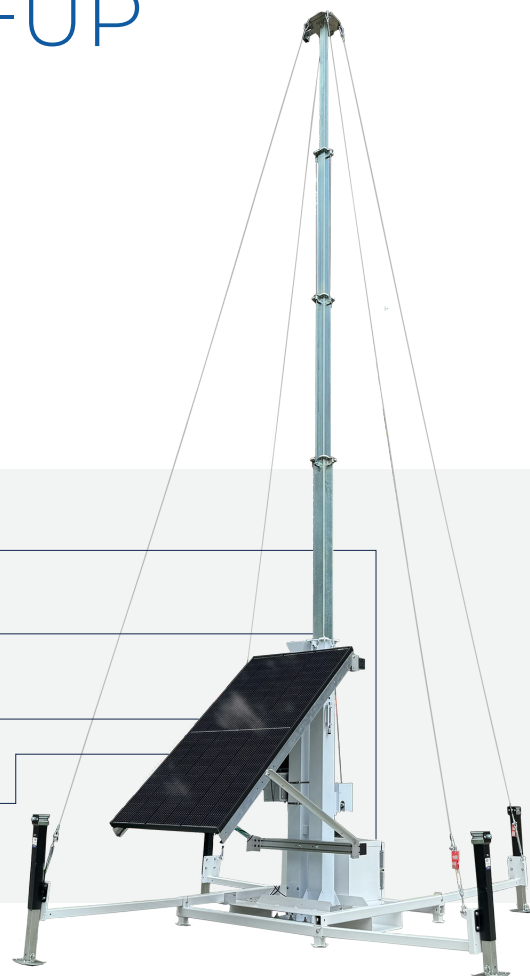
Constant power to the construction camera



30% federal renewable-energy tax credit



Rugged & portable power for the entire site



Crank-up Dimensions

63.5" L (1.61 m)

63.5" W (1.61 m)

91.5" H (2.31 m)

Mast Height

30 ft (9.144 m)

Construction

Frame: Steel with two-coat automotive paint

Lockable cabinet: weatherproof aluminium

Solar Panel Dimensions

69.09" L (40.64 cm)

40.87" W (66.04 cm)

1.38" H (3.81 cm)

Solar Panel Wattage

370 Watt

Weight

1125 lb