



VISUALIZE

better managed jobsites



Through the Lens of Innovation

The hidden tools of a construction camera, and why every industry professional should invest in one

By combining powerful photos with intuitive software, OxBlue uses visual data to unlock and share the story of your jobsite with you. Inside, we'll discuss the key ways you can use our software to document, manage and market the project.

A picture's worth a thousand words — but only if you know how to read it.

Construction cameras capture clear, visual data that can likely tell you what you need to know from a jobsite. With static images, live feeds and timelapse videos, construction cameras are one of the most flexible tools you can use. No matter your role or the type of project you're involved in, visual data helps you promote your work, increase team communication and improve best practices.

Generate results no matter the project with construction cameras

Every project requires three fundamental components to build success:

- Clear communication
- Visibility on the jobsite
- Efficient resource management

Construction cameras deliver these results by providing real-time visuals and straightforward access to what's happening on site. Images and video make it clear where things are on track or falling behind schedule, helping determine if a site visit is necessary.

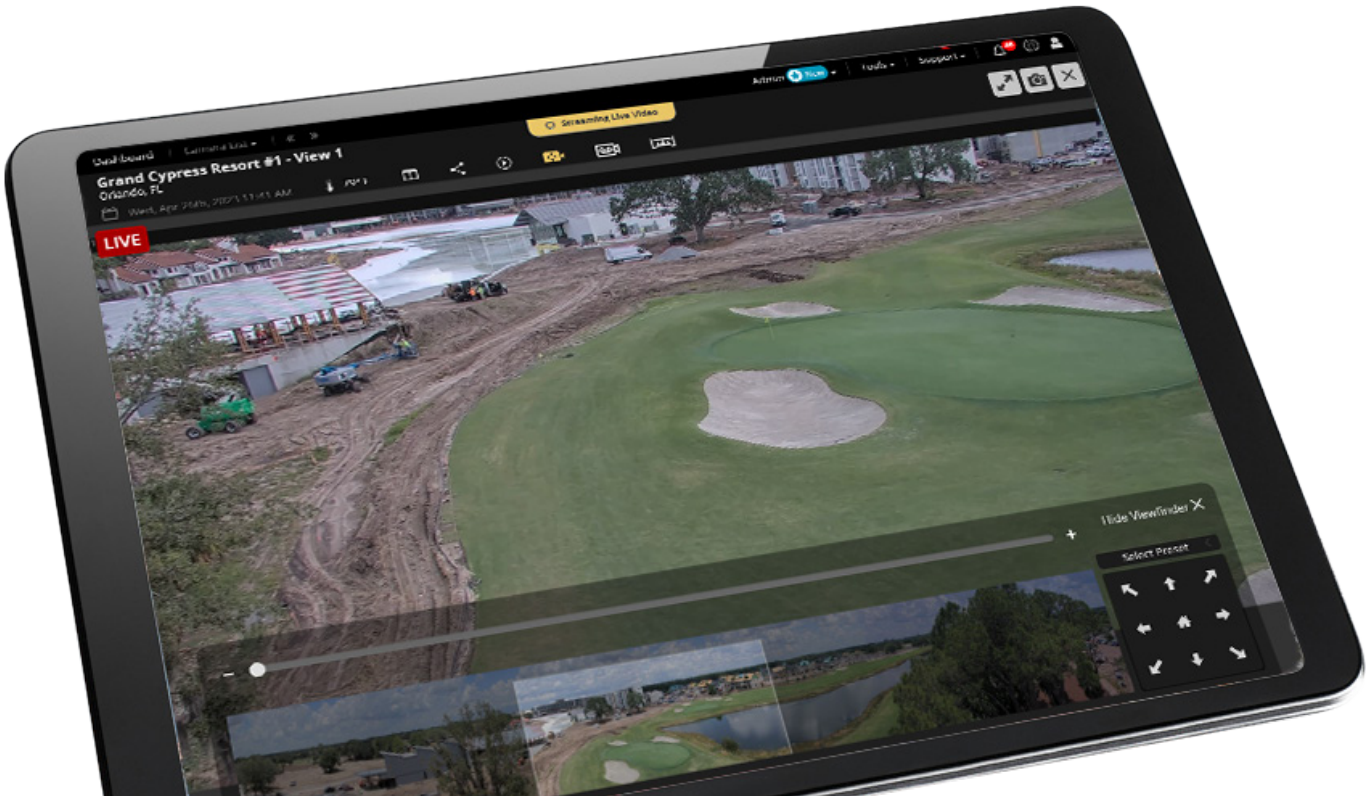
MANAGE

“By viewing the job site in real time, we can verify work in place, identify any performance issues, and have more visibility to things we could possibly do differently.”

— RaceTrac

With the OxBlue Interface, it's easy to increase communication with one-click sharing features, remote access to the jobsite and user controls that allow for a closer look.

OxBlue construction cameras also have tools that help highlight patterns and team actions. Using the advanced capabilities of the camera, it's easy to detail performance in new ways. Weekly Activity Analysis can show who routinely sticks to schedule and premium analytics can emphasize a team's ability to adjust to unexpected interruptions. All of this important information gives a detailed look at what's been done and what clients can expect to see.





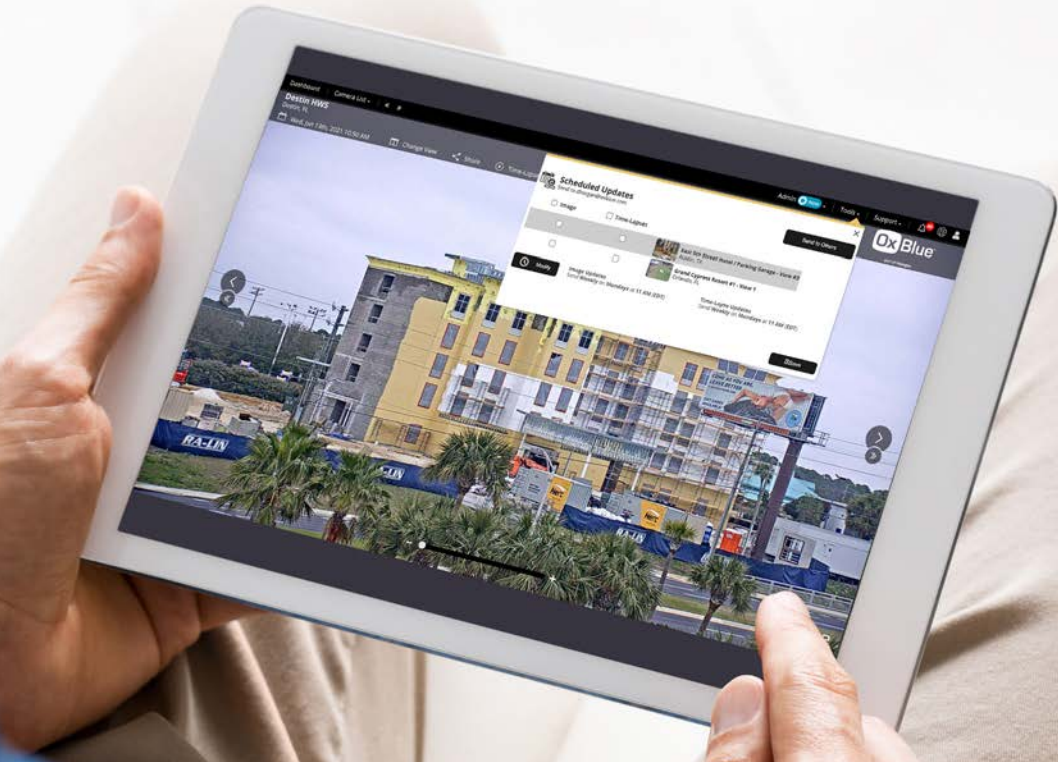
**Monitor Jobsites
Simultaneously**

See all your projects in one dashboard view or sort by location to monitor multiple sites simultaneously.



View Progress Remotely

Access the jobsite on any device at any time using video on demand or live streaming.



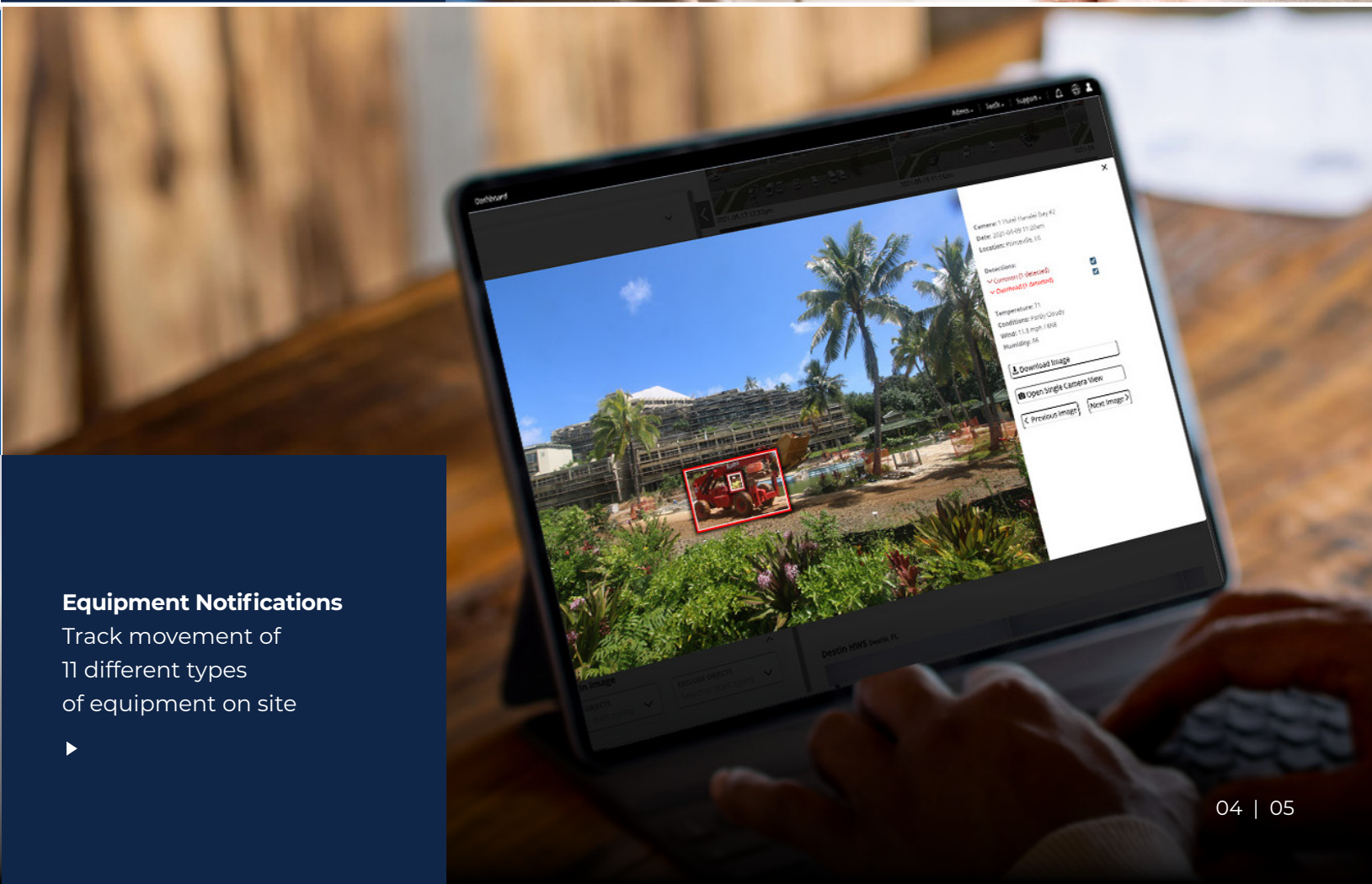
Schedule Updates

Define a schedule to routinely send images and/or time-lapse videos to yourself or others.



Monitor Weather Impact

Quickly see if weather conditions have impacted progress or performance with a grid that highlights precipitation, humidity, wind and temperatures.



Equipment Notifications

Track movement of 11 different types of equipment on site





Activity Analysis

Compare jobsite activity with weather events to ensure teams are maintaining schedules and working at peak performance levels.



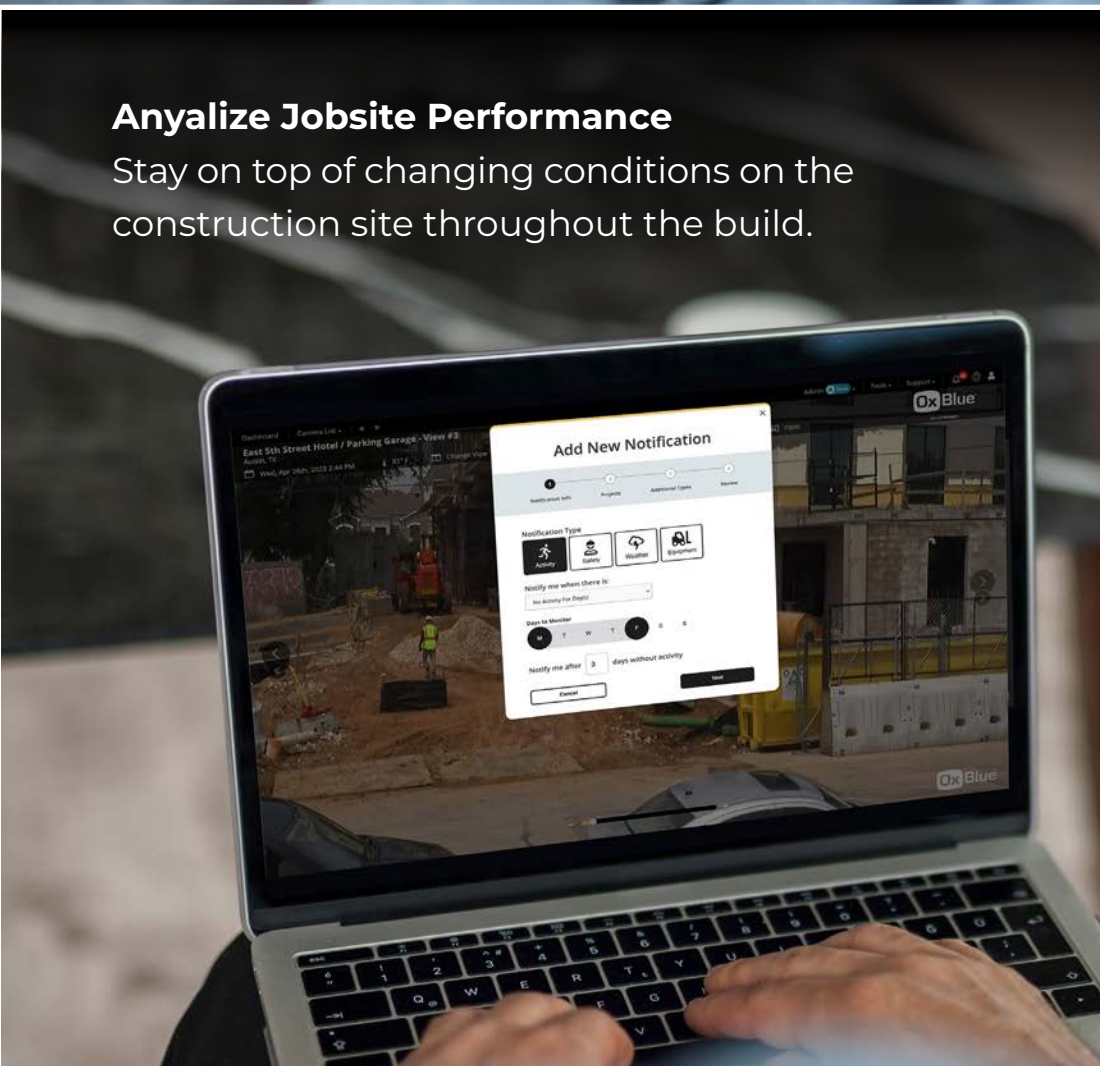
Safety Tracking

Watch the jobsite in real-time and ensure safety compliance levels across projects. OxBlue's AI looks for standard PPE compliance and highlights potential issues.



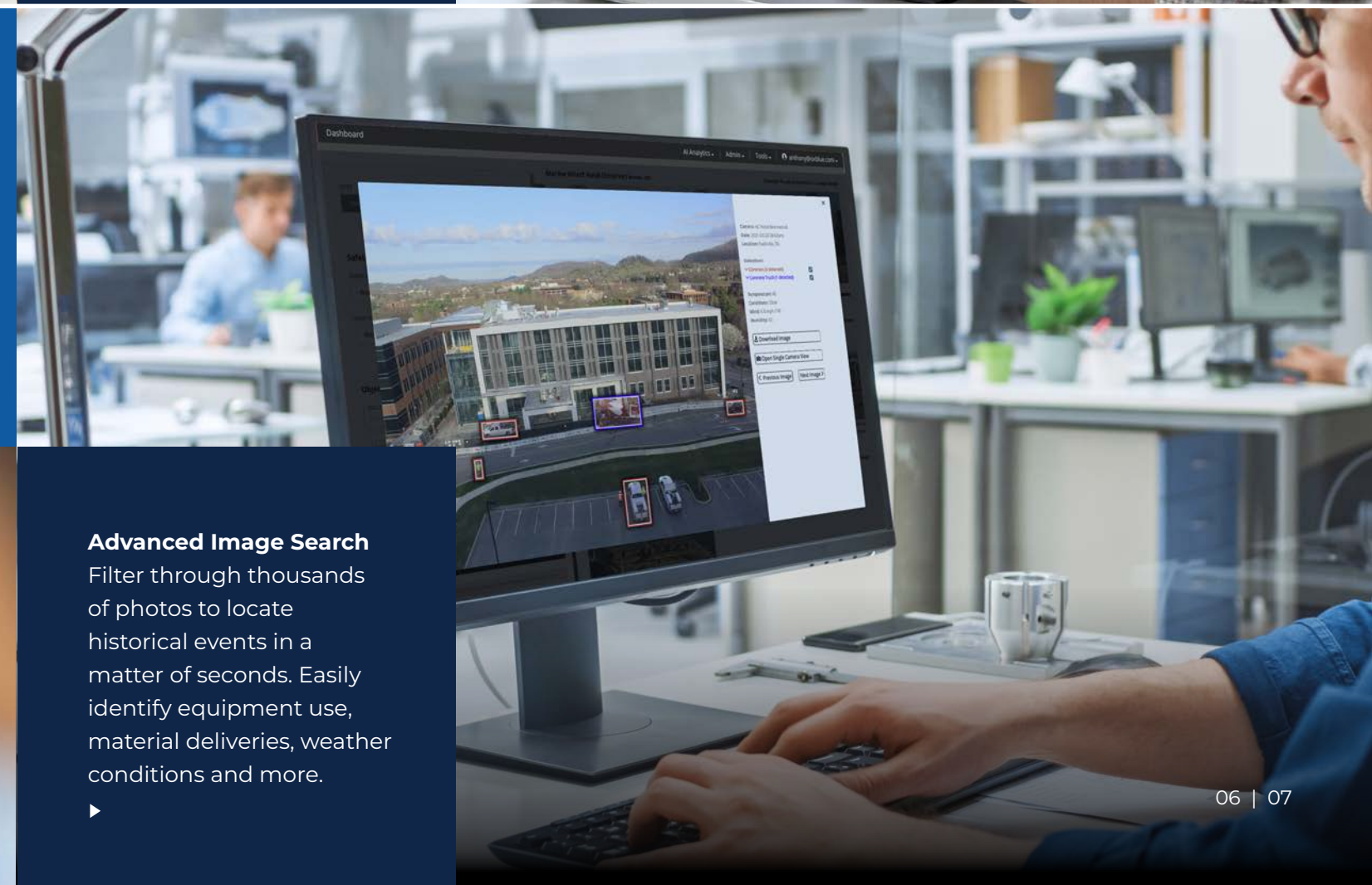
Anyalyze Jobsite Performance

Stay on top of changing conditions on the construction site throughout the build.



Custom Notifications

Set activity, safety, and weather alerts so you can quickly identify important priorities and know when your attention is needed on site.



Advanced Image Search

Filter through thousands of photos to locate historical events in a matter of seconds. Easily identify equipment use, material deliveries, weather conditions and more.



Safeguard your jobsite with security monitoring

Reduce risk, combat theft and prevent damages after-hours using OxBlue's security cameras. Combined with our trusted motion-detection cameras, OxBlue's security solution provides real-time deterrence capabilities that stop intruders in their footsteps.

SECURE

"We were able to use the footage from our OxBlue camera to see what time a break-in happened and capture the make, model and license plate of the car involved."

— Peachtree Hotel Group

LIVE

24/7 Jobsite Surveillance

Self-monitor the jobsite with live HD video construction cameras



Smart Motion Detection

Artificial intelligence-enhanced motion detection hones-in on true threats.



Rapid Threat Verification

Add trained agents to review motion alerts and dispatch police if needed.

- UL Certified
- Five Diamond Certified
- TMA Member



Strobe, Sirens & Talk Down Audio Alerts

Deter threats with hardware options for blue/strobe lights, talk-down audio and battery backups that help support Builder's Risk requirements and scare off intruders.



Understand your jobsite in-depth with dynamic visuals

On any given day, project managers and general contractors have a list filled with tasks and small details — taking time and attention away from project priorities.

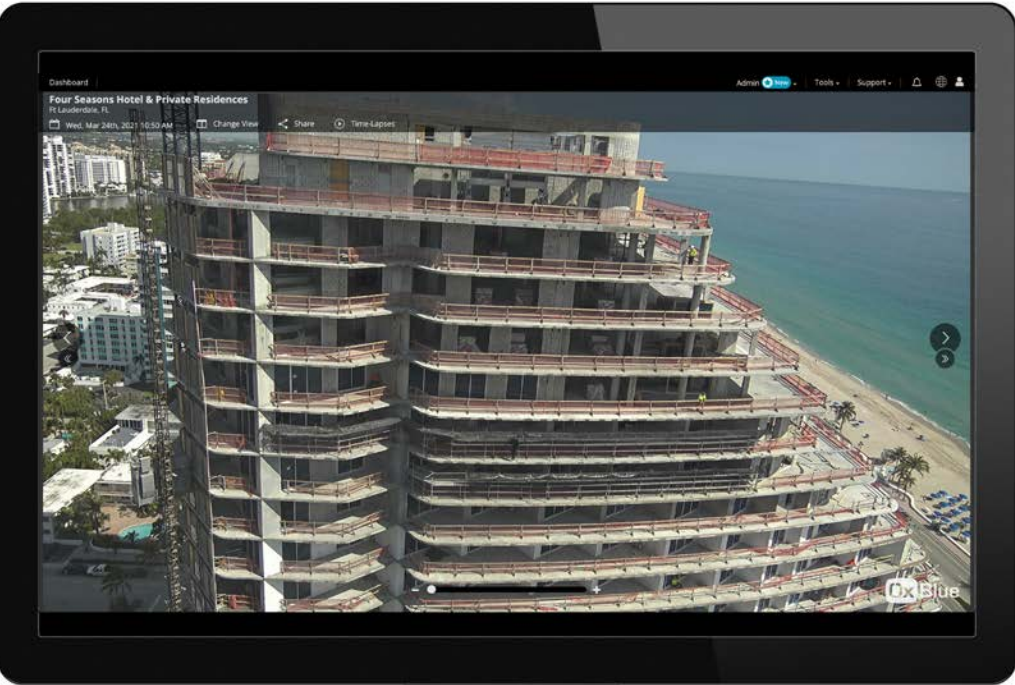
OxBlue offers an easy way to take control of the jobsite with our advanced construction cameras and visual documentation services. What's captured by a construction camera is a clear, unbiased history of what happens in a day.

“Even though the project was 100 miles away, we were always able to pull up the interface, see what was going on and easily catch up on the latest progress.”

— Lumar Devco, LLC

DOCUMENT

Our time-lapse features and activity analysis serve up key information about the jobsite — detailing an entire day of work in just 30 seconds. The visual record makes it easy to review progress, validate work hours and detect issues that could impact the project.





Side-by-side view



Overlay view



Image gallery view

Compare multiple jobsites' activity, progress and weather conditions the way you want to.

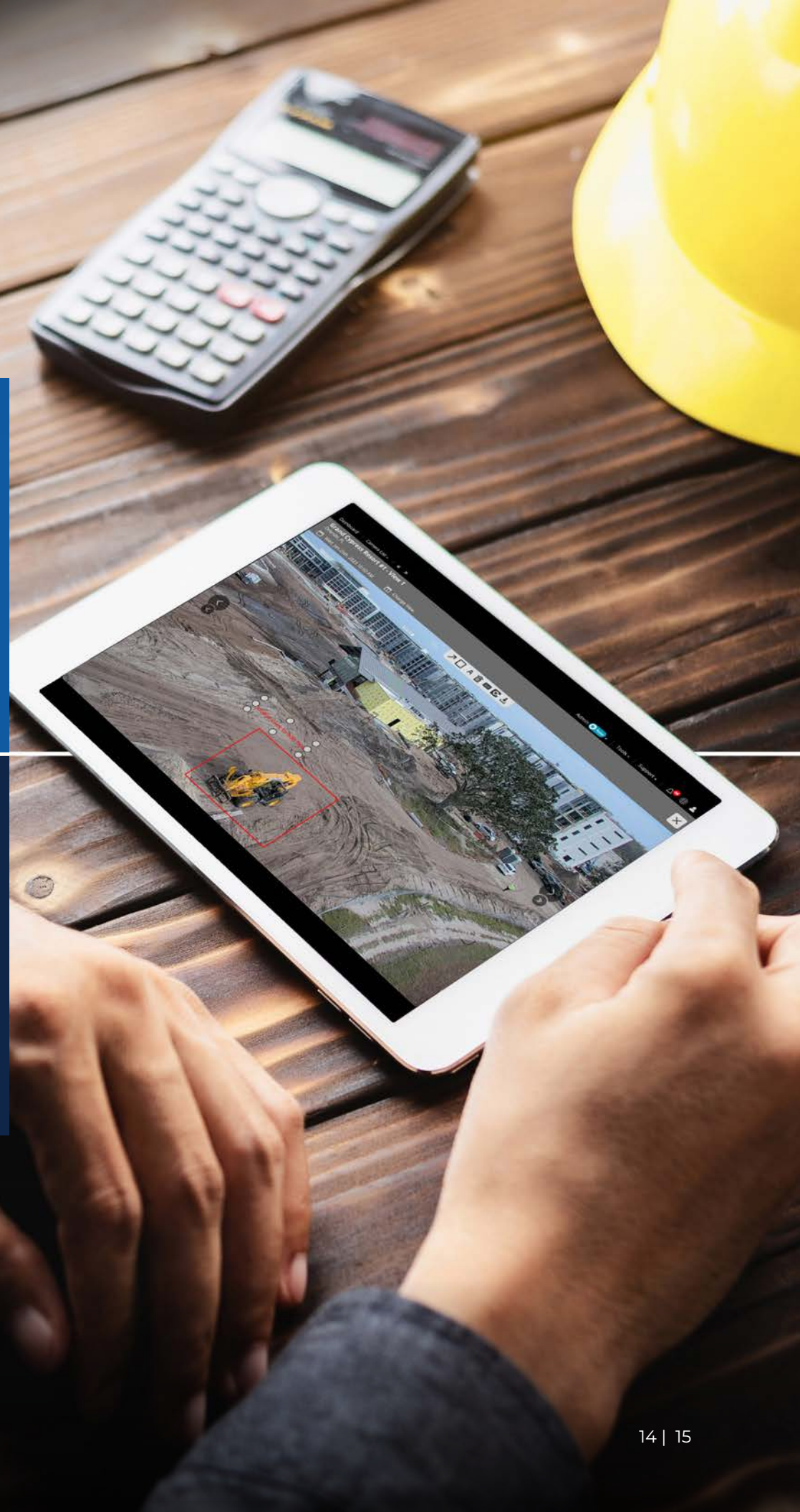
Compare Images

Access images taken from any point during construction and use different views to clearly mark milestones and day-to-day changes.



Mark Up Images

Highlight specific areas of the jobsite with mark up tools that let you add text, draw, point to or circle details



Showcase your work and strengthen your bidding process

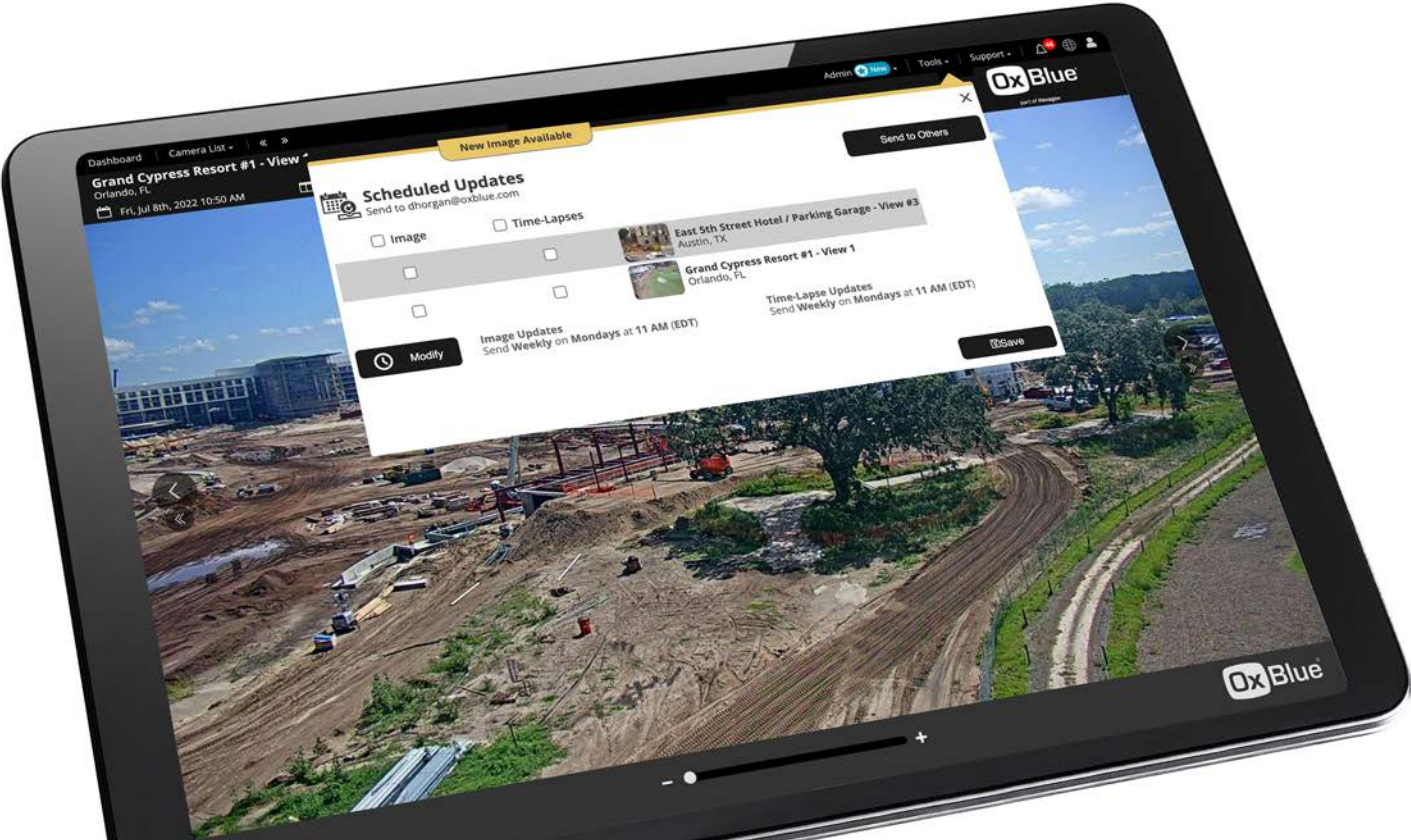
There's more behind the build than just the finished product.

Showing the full story of a successful project means highlighting not only progress, but the data used to outperform the competition. Construction cameras document the details so professionals can visually share results.

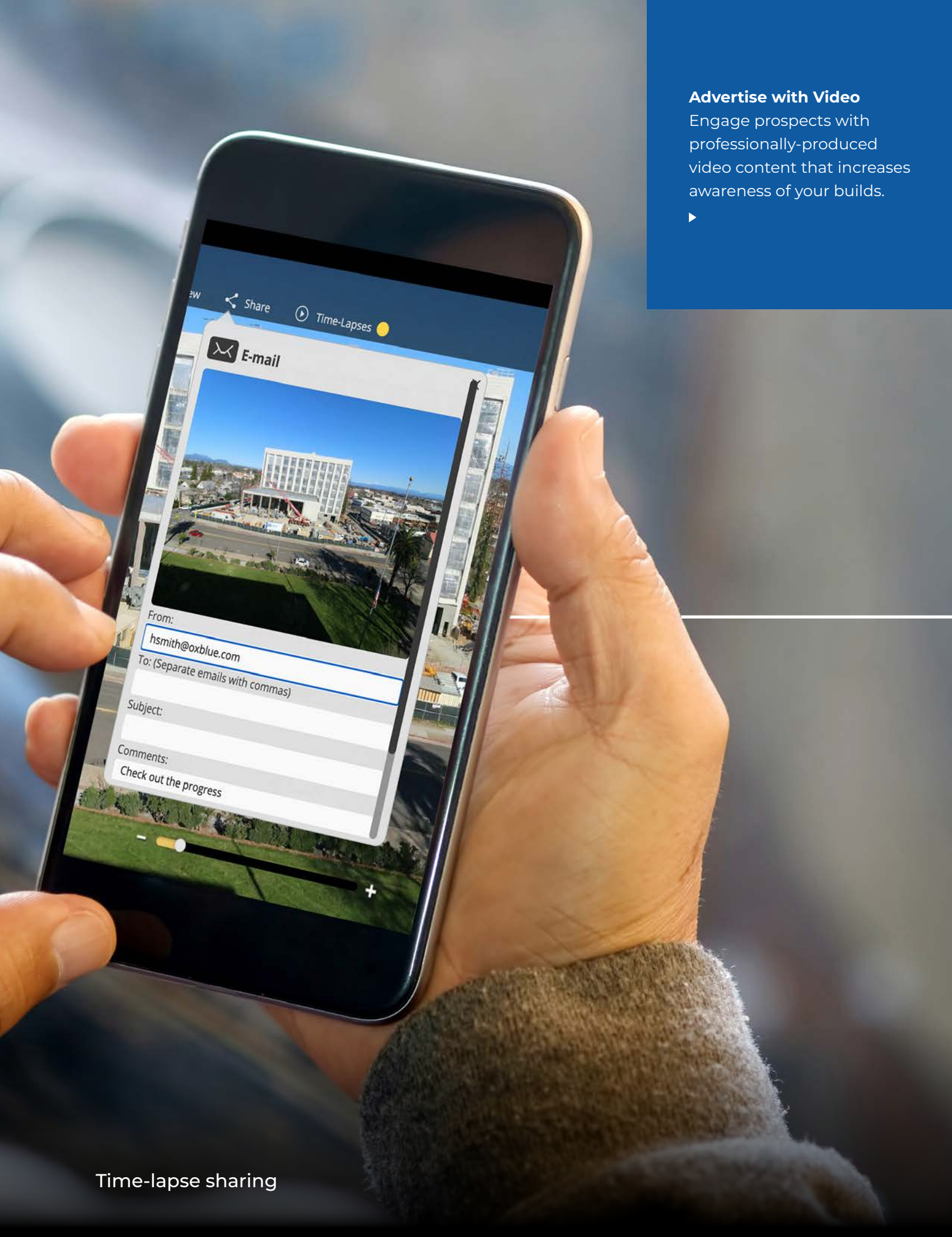
MARKET

“It was everything we expected for our project... we are very satisfied with the results.”

— Homewood Flossmoor High School



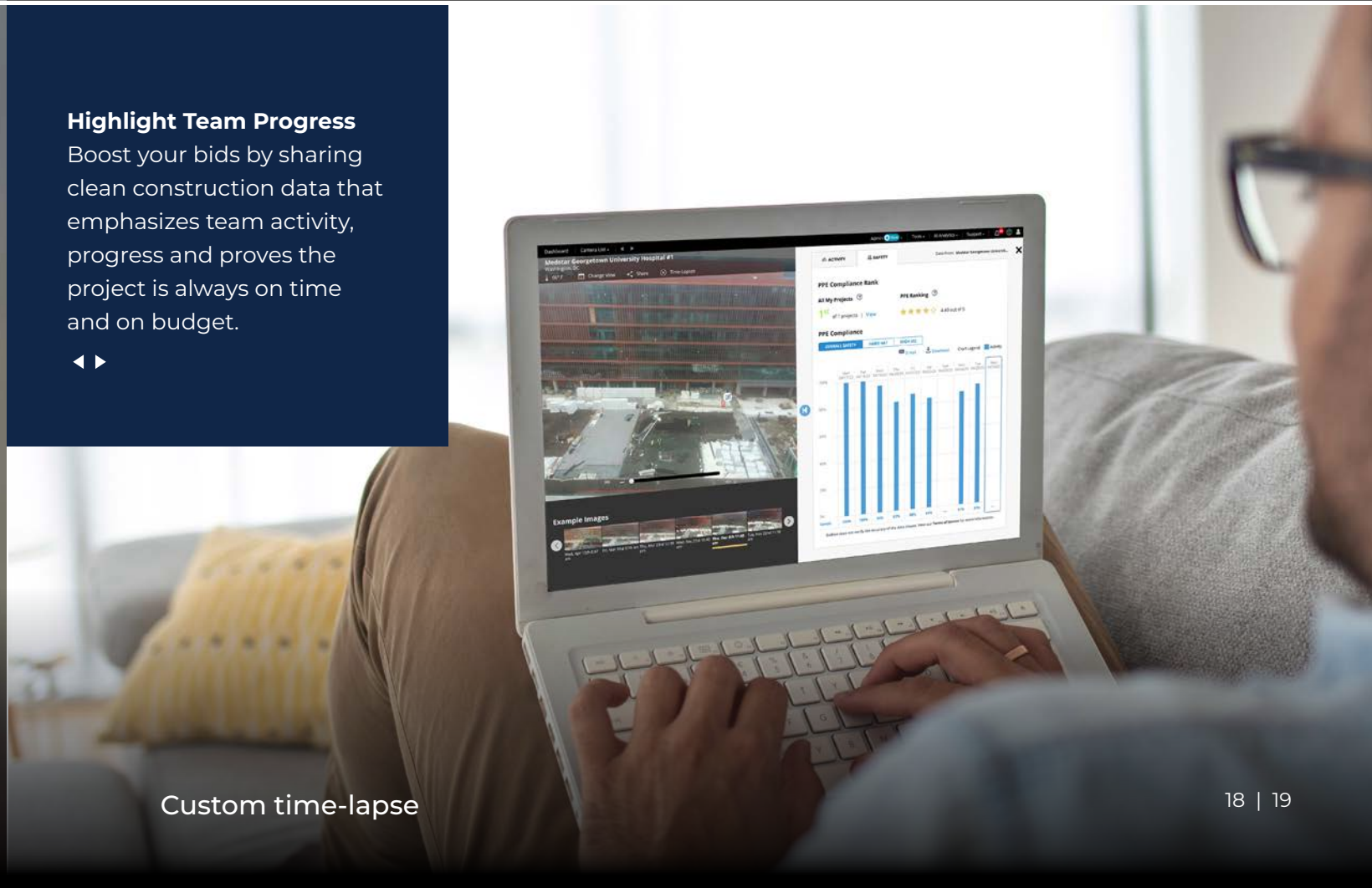
Time-lapse features are powerful marketing tools that share months worth of activity in a beautifully-edited cinematic format. This short video content can capture the attention of an audience on social media, websites and in proposals. It shows the extent of work done on the project and the dramatic results.



Advertise with Video
Engage prospects with professionally-produced video content that increases awareness of your builds.

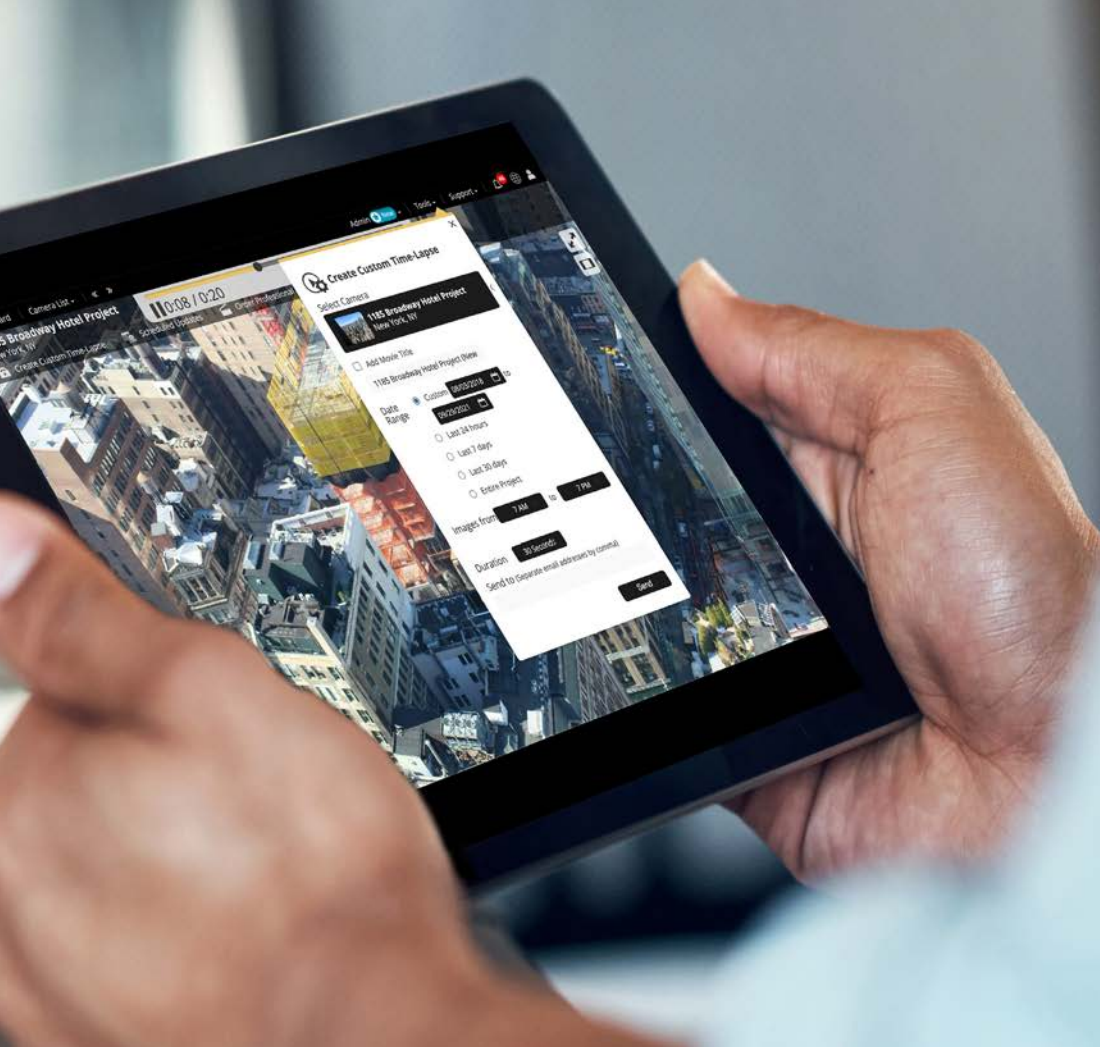


Highlight Team Progress
Boost your bids by sharing clean construction data that emphasizes team activity, progress and proves the project is always on time and on budget.



Time-lapse sharing

Custom time-lapse

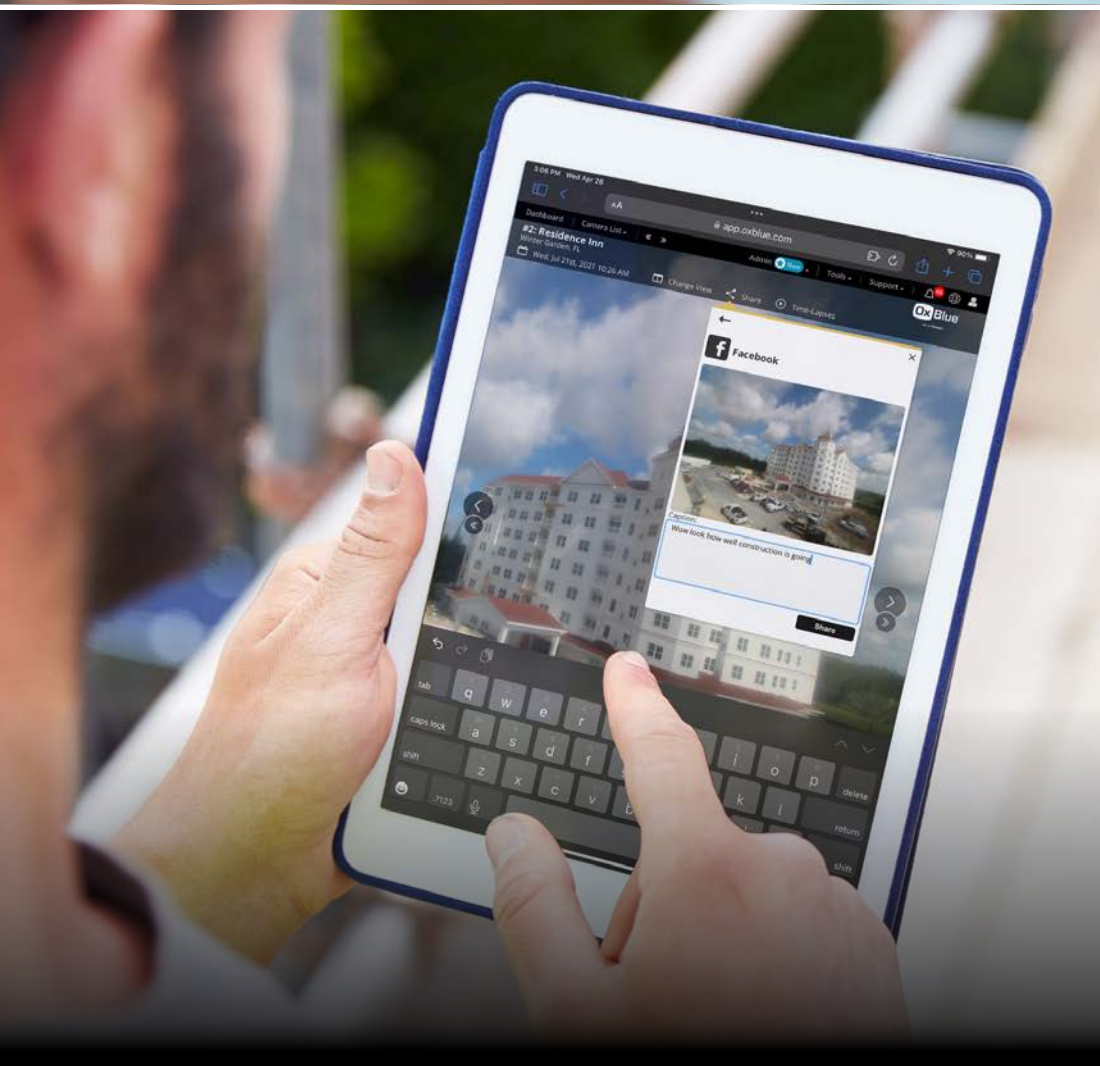


Generate Custom Content

Create time-lapses based on your own parameters to share updates on project progress.

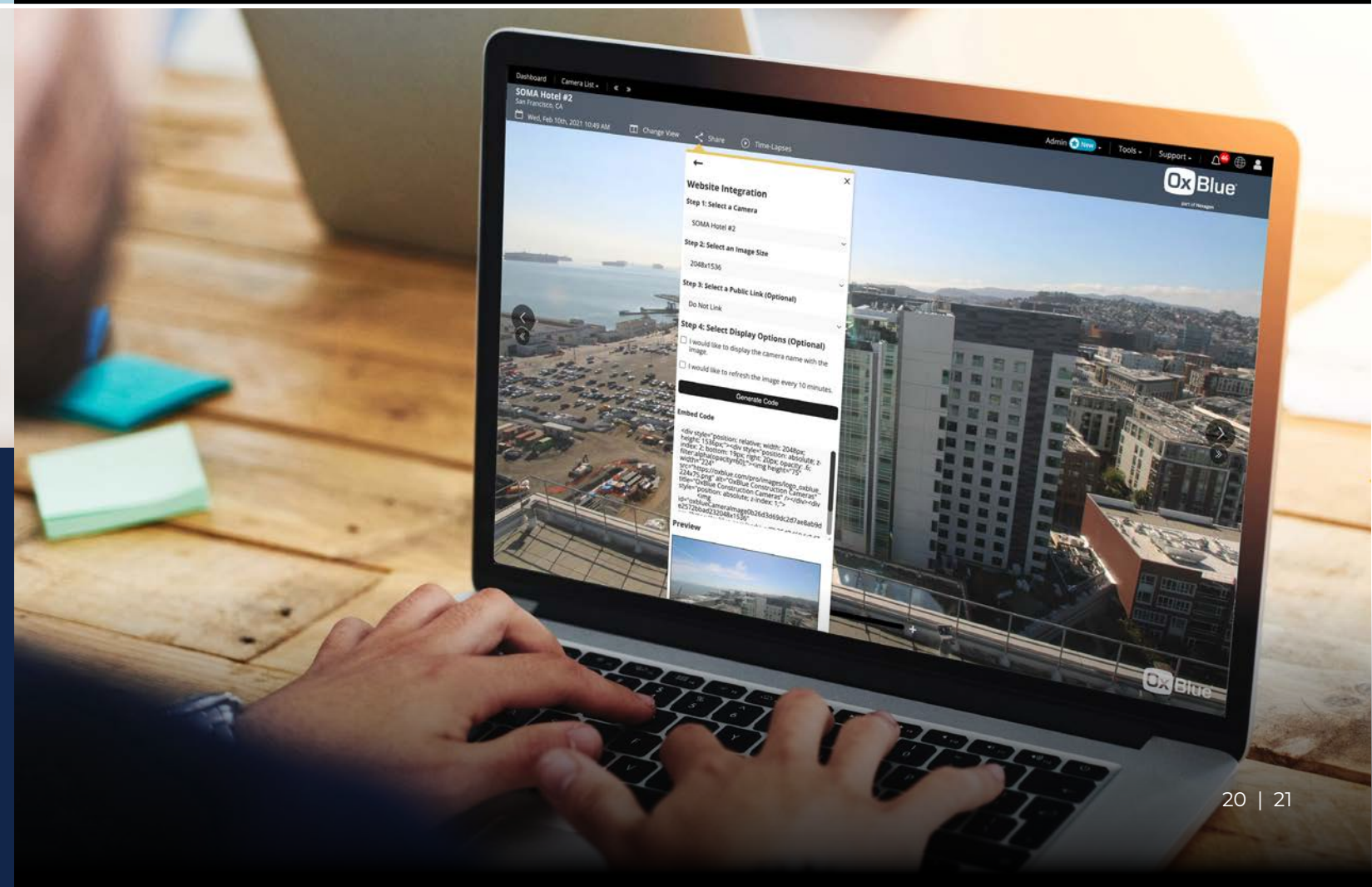


Live streaming your jobsite



Share to Social Media

Instantly share images, video or time-lapse clips from OxBBlue's web app with just a click.





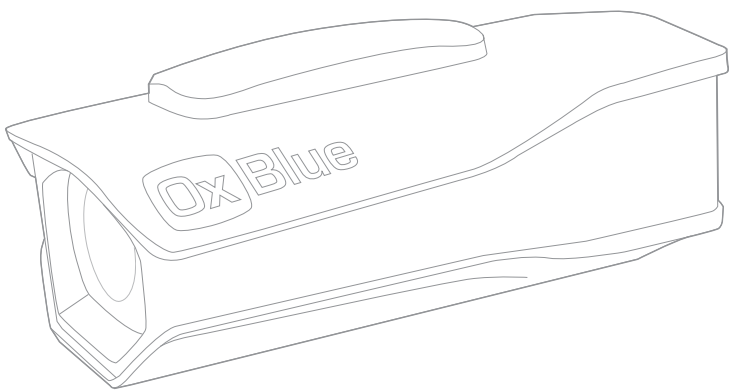
VISUALIZE

Your Job in Plain Sight

Open a new realm of understanding into your jobsite with OxBlue's powerful time-lapse and visual data camera systems.



“We can clearly see what floor the project’s on, what’s complete – you get a much better feel for what’s happening on the jobsite.”
— KDC



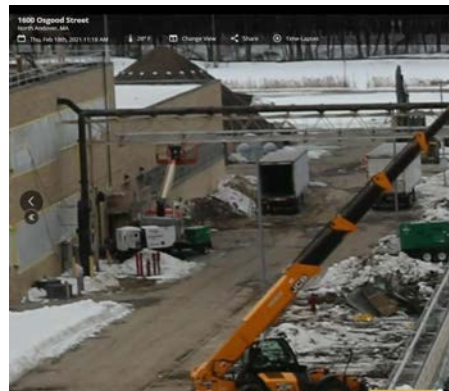
COBALT

Capture high-resolution still images of your jobsite with construction time-lapse cameras that provide detail and insight into your project.

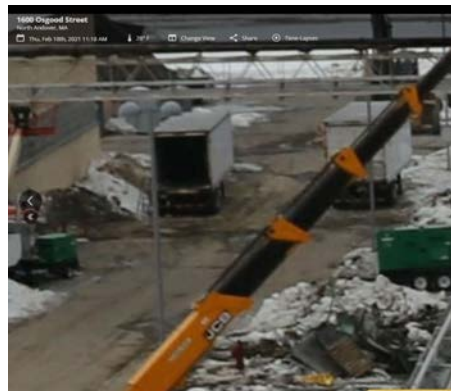
Cobalt cameras are available in 8, 16, 24, and 60 MP models. Consult your rep for the ideal resolution.



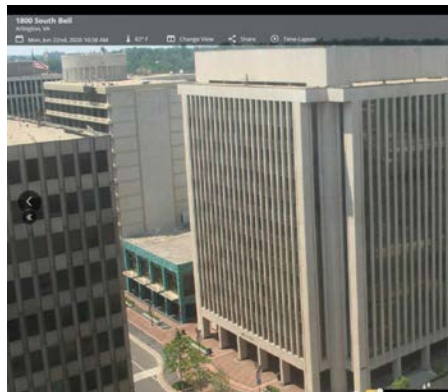
60 MP 400% magnification



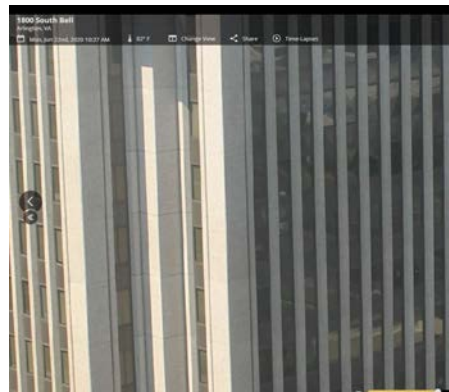
1,040% magnification



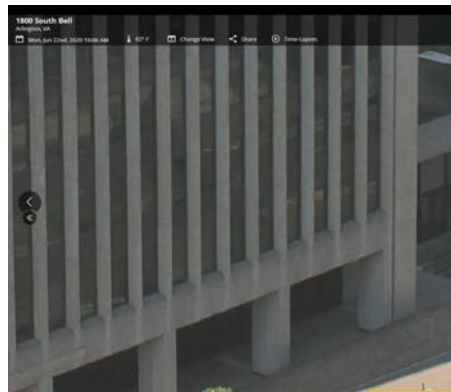
1,640% magnification



24 MP 160% magnification



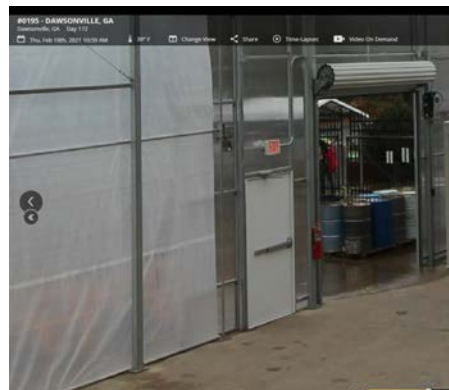
400% magnification



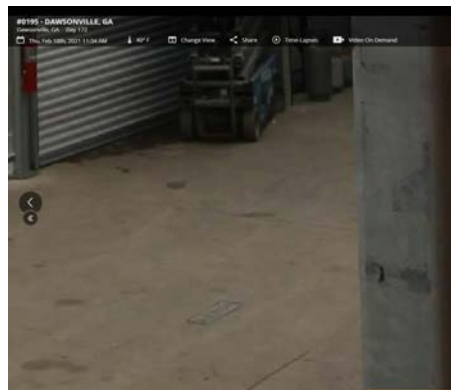
620% magnification



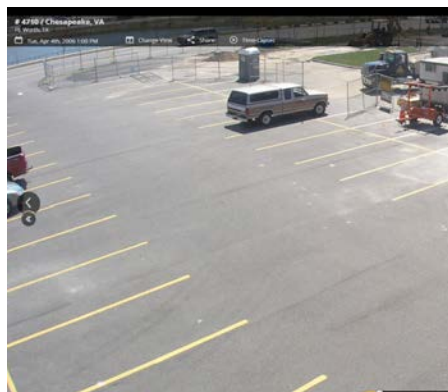
16 MP 160% magnification



400% magnification



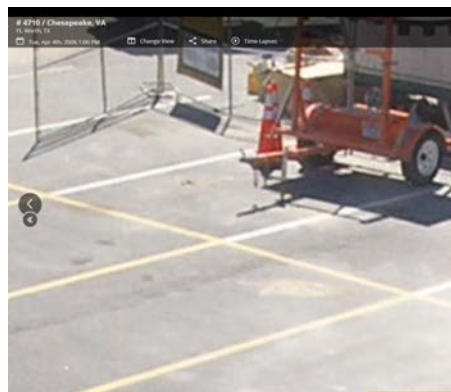
700% magnification



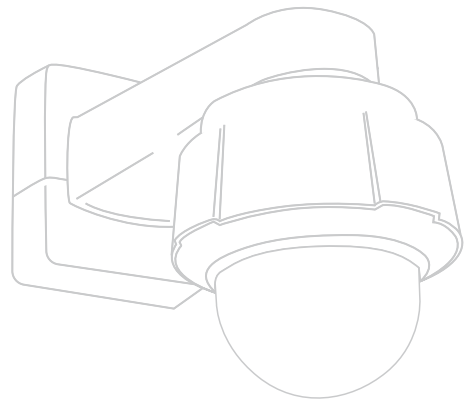
8 MP 160% magnification



400% magnification



700% magnification



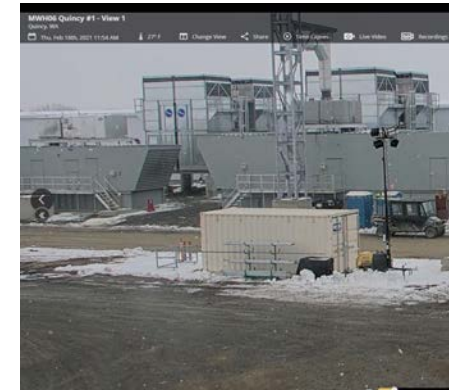
“Roofing is a very dangerous job, so a lot of what we use the camera for is safety. Our managers monitor the images for risks during a project and keep OSHA regulations top of mind.”

— Tremco

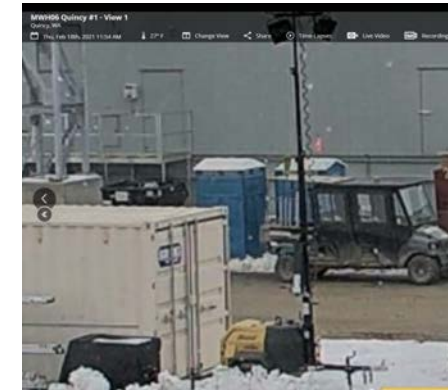
SAPPHIRE

See the life of the jobsite with a video camera that gives you live insights into the status of your project.

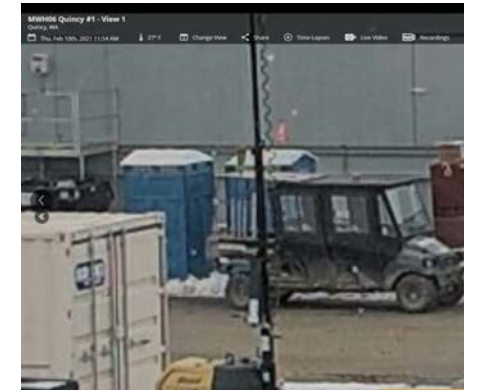
Sapphire cameras are available in 8 and 4 MP static and, 8 and 2 MP PTZ models. Consult your rep for the ideal resolution.



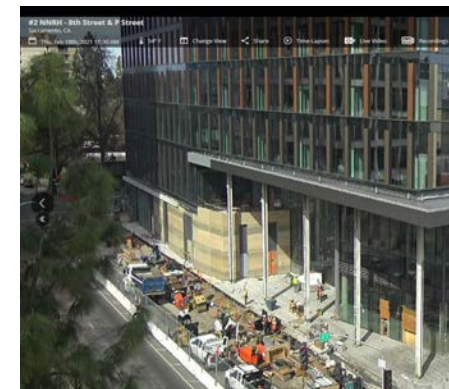
8 MP VPTZ 160% magnification



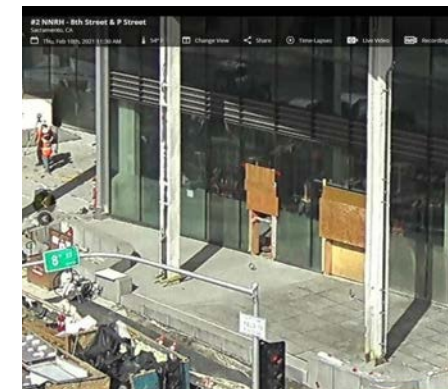
400% magnification



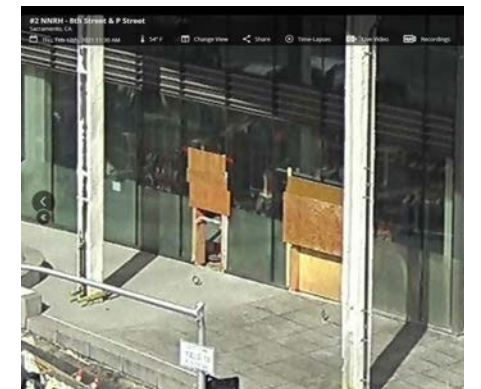
520% magnification



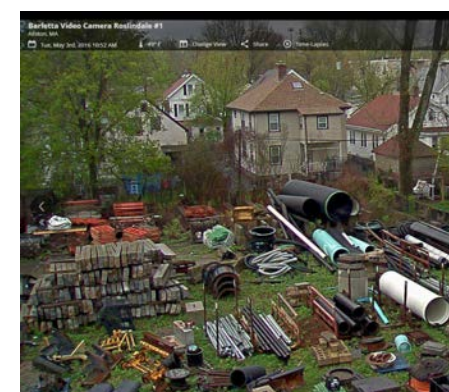
2 MP VPTZ 160% magnification



400% magnification



520% magnification



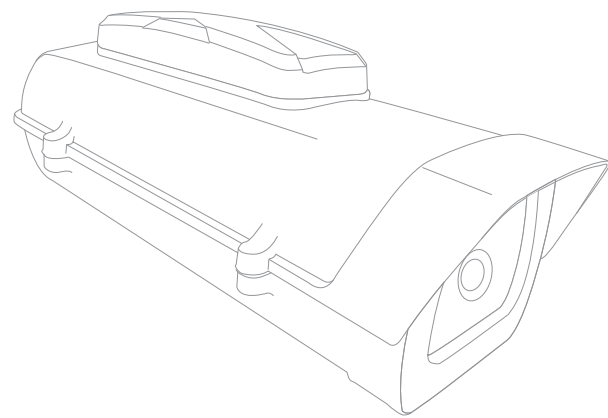
8 MP STATIC 160% magnification



400% magnification



520% magnification



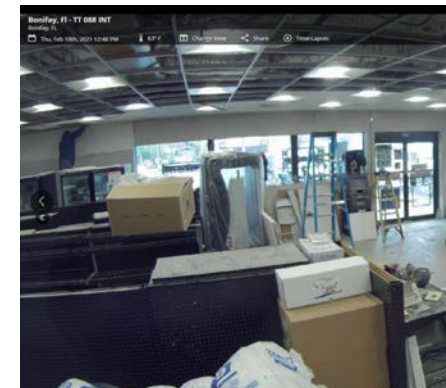
“The OxBlue Team was very responsive, attentive and proactive throughout the entire project. OxBlue operates with professional customer service and has high quality products.”

— Clark Construction

INDIGO

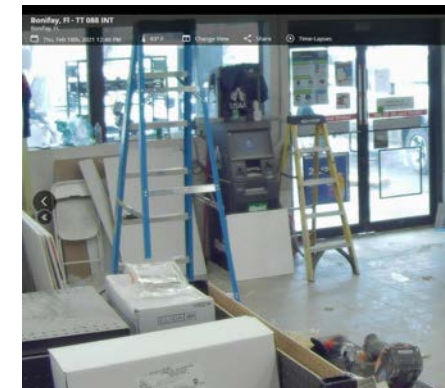
Reduce the need to be on site for your interior projects with an expanded field of view and the ability to pan and zoom within photos.

Indigo cameras are available in 8, 12, and 16 MP models. Consult your rep for the ideal resolution.

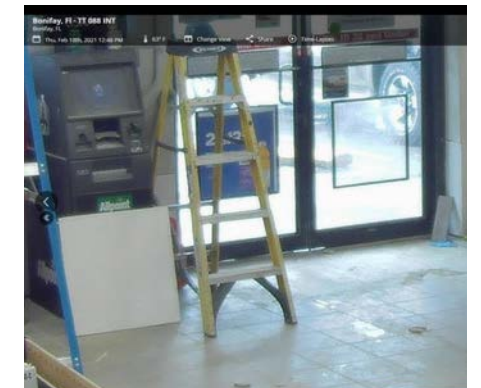


16 MP

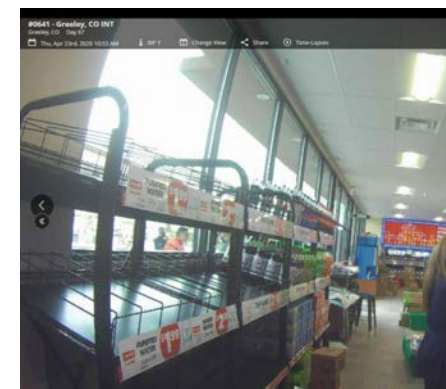
160% magnification



400% magnification

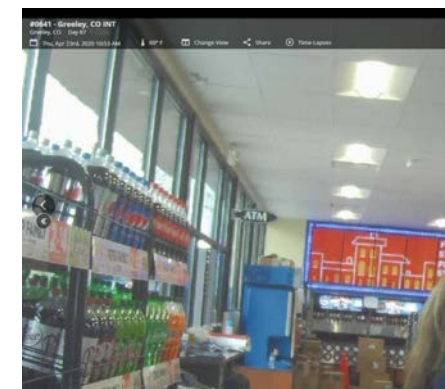


700% magnification

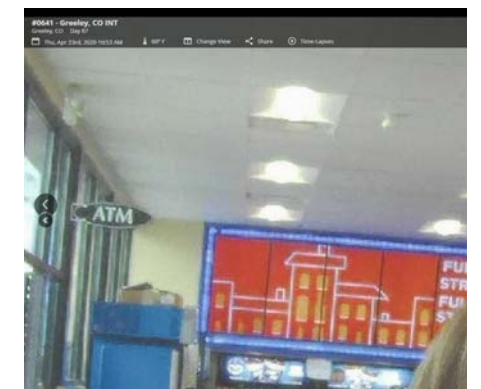


12 MP

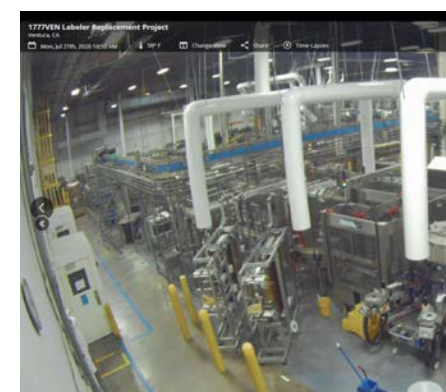
160% magnification



400% magnification

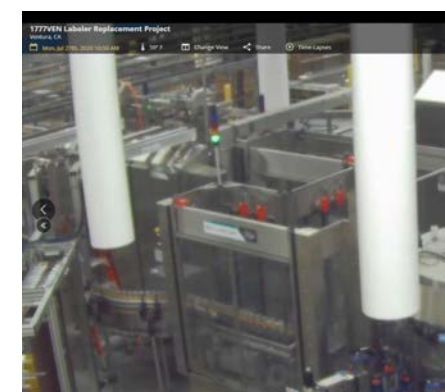


620% magnification

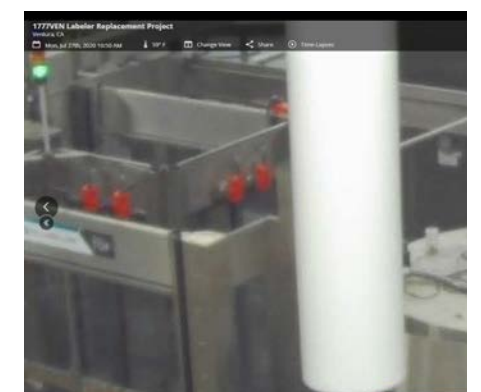


8 MP

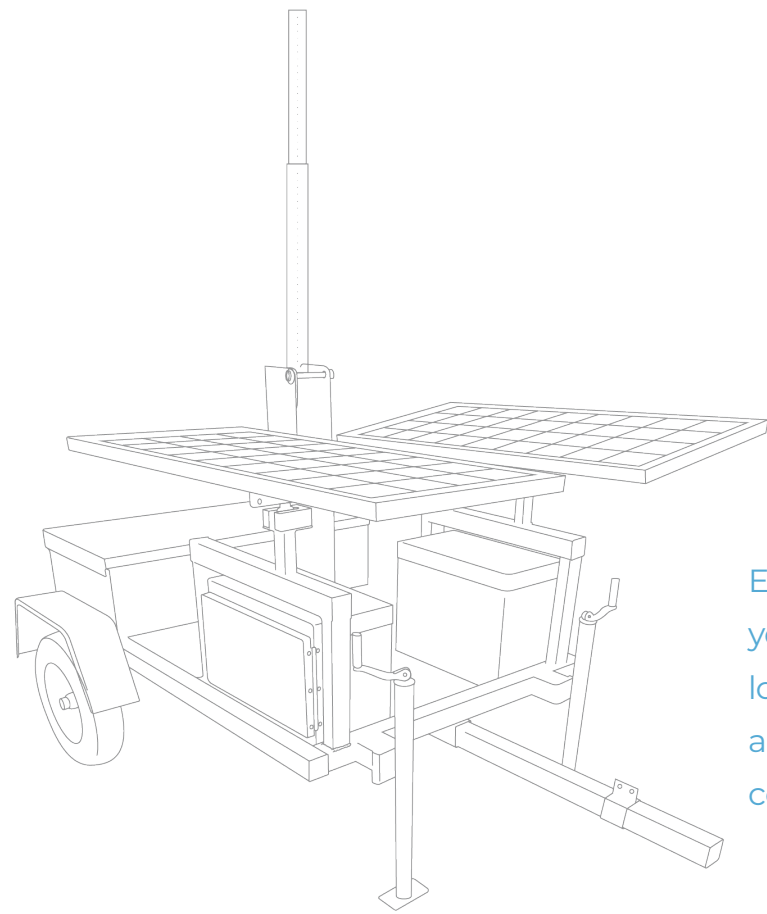
160% magnification



400% magnification



700% magnification



Ensure your camera is always monitoring your project, even in the most remote locations. OxBlue's portable solar trailers and solar power stations are ready to connect you to the jobsite.

SOLAR

Designed specifically for OxBlue cameras, solar is available in a variety of dimensions based on your needs. All solar options typically qualify for a 30% federal tax credit for renewable energy products.



Solar Station



Solar Trailer



Solar Telescopic Mast

SEE THE STORY BEHIND YOUR JOBSITE WITH OXBLUE