

An aerial night view of a city skyline. In the foreground, a large construction site is visible, featuring several yellow excavators and piles of earth. The surrounding city is illuminated with streetlights and building lights, creating a vibrant urban scene. The sky is dark with some clouds.

ENVISION

a better managed jobsite

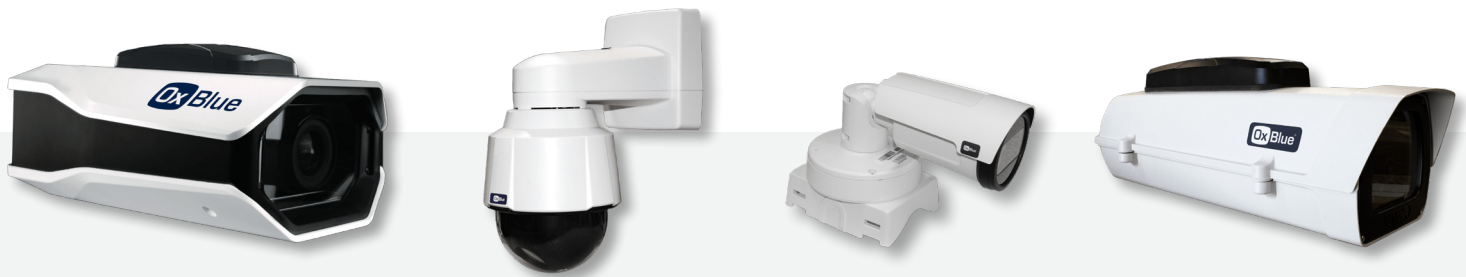
Capture, share and understand jobsite progress and performance with ease. Using OxBlue high-definition camera systems and security features, teams can monitor risks, manage progress and document details from dirt to delivery.

OxBlue

part of Hexagon

CAPTURE CLEAR PROJECT DETAILS

Document the history of jobsite activity, safety and security with industry-leading HD photos, time-lapse and live streaming webcams. From big picture to little details, we offer a full portfolio of turnkey camera systems built to suit your needs.



Cobalt Series	Sapphire VPTZ	Sapphire Static	Indigo Series
8, 16, 24, 60 MP	2 & 8 MP	4 & 8 MP	8, 12, 16 MP
HD images & video on demand	HD Images and live streaming	HD Images and live streaming	HD images & video on demand
96° wide-angle	360° panoramic images	130° / 109° wide-angle	120° wide-angle
Adjustable optical zoom	30x & 12x optical zoom	Optical zoom on 8MP	Adjustable optical zoom
	Motion detection (after hours security)	Motion detection (after hours security)	
Lifetime warranty	Limited warranty	Limited warranty	Lifetime warranty
All Systems			
Turnkey installation			
Solar compatible			
Built-in 4G LTE modem			
Unlimited remote storage			
Rugged, weatherproof enclosure			
Camera reconditioning between projects			

OFF-GRID ENERGY OPTIONS FOR A RELIABLE POWER SOURCE

Set a camera anywhere using OxBlue Solar's plug-and-go solution for mobile or stationary power. All OxBlue cameras are solar-compatible and can connect to a range of voltage options depending on your needs.

Small	Medium	Large
45-50 Watt	65-110 Watt	180+ Watt
Built-in 5-day battery backup		
Anti-tamper locking cabinets		
Pre-configured and out-of-box ready		
Internal digital display		

Deter threats with strobe lights and talk down audio equipment

Additional threat-deterrence equipment includes talk down speakers, blue strobe lights, alarms and more.

Set it and forget it with unbeatable support and smart camera management

We'll remotely adjust features and functions during shifts in seasons or weather conditions for a reliable connection.

Helios Single Panel



Single Panel System



Multi-Panel System



Trailer Mounted Station



30' Telescopic Crank Mast

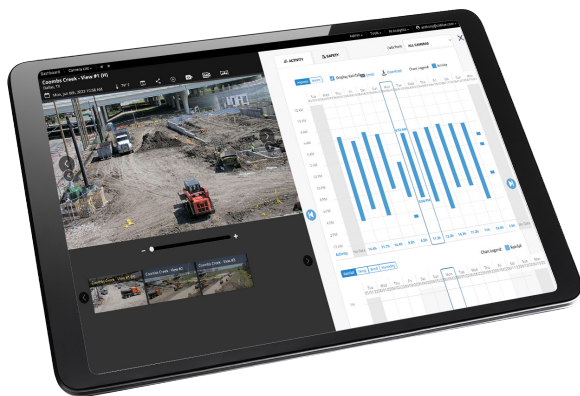
QUICKLY UNDERSTAND PROGRESS & PERFORMANCE

Track critical milestones, monitor compliance, and communicate with stakeholders in a matter of seconds. Our intuitive interface powered by AI helps you stay on top of jobsite activity, weather delays, safety gear usage and more.

- Live photo & streaming video
- Apple & Android apps
- Website integration tools
- Multi-camera dashboard & hybrid map views
- Side-by-side & overlay image comparison
- Historical views by date & time
- Live & historical weather data with every image
- Automated progress reports & scheduled updates
- Email, markup and social media sharing tools
- Integrations with Plangrid, Procore & More
- Save photos to an album with comments
- Mobile/tablet photo uploads
- Slideshow mode for non-live sharing



- HD archives & timelines
- Media export
- Edge security video recording
- Admin & security management
- API for custom integrations
- AI: Activity tracking
- AI: Safety analysis
- AI: Smart camera management (inactivity, obstructions, etc.)
- AI: Smart notifications & alerts
- AI: Equipment tracking
- AI: Multi-project analytics & search (coming soon)



Access your job site imagery and project documentation in one location by integrating your OxBlue camera into your project management system.

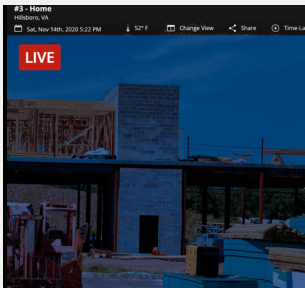
OxBlue Seamlessly Integrates with:



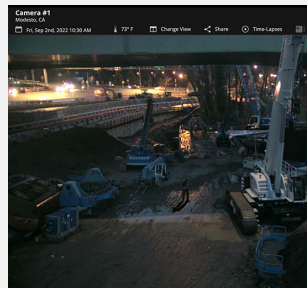
SAFEGUARD YOUR PROJECTS WITH SECURITY MONITORING

Reduce risk, combat theft and prevent damages after-hours through OxBlue's surveillance monitoring service. While all Sapphire video cameras include motion detection that lets you review threats yourself, our optional service acts as a faster, better first line of defense for the jobsite.

HOW IT WORKS



24/7 Jobsite Surveillance



Smart Motion Detection



Rapid Threat Verification



Strobe, Sirens & Talk Down Audio Alerts

Three levels of security services to shield job sites of any size:

DETECT	DEFEND	DETER
<p>Self-monitor the jobsite with instant motion alerts that focus on true threats, not bugs, birds or distant traffic.</p> <ul style="list-style-type: none"> ✓ Motion detection ✓ Real-time monitoring alerts ✓ Set monitoring hours ✓ Solar compatibility 	<p>Count on certified monitoring agents to verify threats and dispatch emergency services swiftly.</p> <ul style="list-style-type: none"> ✓ Motion detection ✓ Real-time monitoring alerts ✓ Set monitoring hours ✓ Solar compatibility ✓ Live agent monitoring and alert verification ✓ Emergency dispatch services ✓ Custom area-monitoring options 	<p>Scare off intruders with advanced security hardware featuring strobe lighting, talk-down capabilities, alarms, and a built-in battery backup.</p> <ul style="list-style-type: none"> ✓ Motion detection ✓ Real-time monitoring alerts ✓ Set monitoring hours ✓ Solar compatibility ✓ Live agent monitoring and alert verification ✓ Emergency dispatch services ✓ Custom area-monitoring options ✓ Blue strobe lighting ✓ Talk down audio ✓ Anti-tamper switch ✓ Onboard battery backup

EASILY SHARE JOBSITE INSIGHTS

Promote progress and keep stakeholders informed with auto-generated updates using time-lapse video. OxBlue's time-lapse technologies document and showcase your work from project inception to completion. Once the project is done, our video experts hand-pick images to craft a stunning visual representation of your work.



- Instantly view, download or share progress
- Generate a time-lapse video with your own parameters
- Schedule recurring updates with images or time-lapses
- Use time-lapse tech designed specifically for construction projects
- Watch your build come to life in a professionally produced video with music, text and more
- Share your cinematic time-lapse knowing only the best images were chosen to represent your brand

WORK WITH A TRUSTED PARTNER

Experience a different approach to customer service. You manage the build, our US-based experts will handle the rest – providing you dedicated, solution driven, customer care.

- Simple set up, returns & relocations
- Nationwide installer network for enterprise level logistics
- Repairs handled remotely and no-hassle replacement services
- Easy relocation and refurbishment options from project to project
- Proactive management of your camera system
- Extensive backend monitoring for camera system health
- Unlimited hosting and image archiving



For More Information

Call: 888-849-2583 or Email: sales@oxblue.com

OxBlue, part of Hexagon, is a leading global provider of construction time-lapse and live streaming video camera services. Since 2001, OxBlue's helped owners, general contractors and industry professionals capture, understand and share construction progress with ease. Based in Atlanta, Georgia, OxBlue operates across the world in 45 different countries and all 50 states.