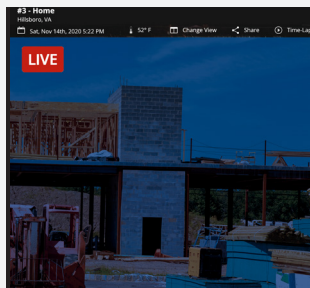


Safeguard your projects with security solutions

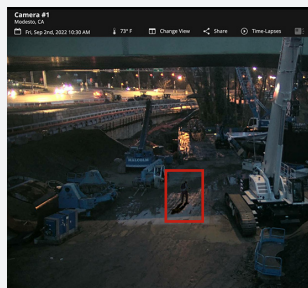
Real-time threat detection, defense and deterrence

Capture your jobsite day and night, with high-definition construction cameras that provide total visibility of your site. Defend your jobsite with added professional agents to verify alerts and dispatch police. And add OxBlue's real-time deterrence hardware to stop intruders in their tracks.

Combat theft with automatic documentation and enhanced security



24/7 Jobsite Surveillance



Smart Motion Detection



Rapid Threat Verification



Strobe, Sirens & Talk Down Audio Alerts

Three levels of security services to shield job sites of any size:

DETECT	DEFEND	DETER
<p>Self-monitor the jobsite with instant motion alerts that focus on true threats, not bugs, birds or distant traffic.</p> <ul style="list-style-type: none"> ✓ Motion detection ✓ Real-time monitoring alerts ✓ Set monitoring hours ✓ Solar compatibility ✓ Infrared illumination 	<p>Count on certified monitoring agents to verify threats and dispatch emergency services swiftly.</p> <ul style="list-style-type: none"> ✓ Motion detection ✓ Real-time monitoring alerts ✓ Set monitoring hours ✓ Solar compatibility ✓ Live agent monitoring and alert verification ✓ Emergency dispatch services ✓ Custom area-monitoring options 	<p>Scare off intruders with advanced security hardware featuring strobe lighting, talk down capabilities, alarms, and a built-in battery backup.</p> <ul style="list-style-type: none"> ✓ Motion detection ✓ Real-time monitoring alerts ✓ Set monitoring hours ✓ Solar compatibility ✓ Live agent monitoring and alert verification ✓ Emergency dispatch services ✓ Custom area-monitoring options ✓ Strobe lighting ✓ Talk down audio ✓ Anti-tamper switch ✓ Onboard battery backup

Best-in-Class Camera Options for Ultimate Visibility

Camera Details				Monitoring Services
2 MP PTZ <ul style="list-style-type: none"> • 1080P Video • 65° Horizontal Field of View • 39° Vertical Field of View • 30x Optical Zoom • Motion Detection 	8 MP PTZ <ul style="list-style-type: none"> • 4K Video • 70° Horizontal Field of View • 43° Vertical Field of View • 12x Optical Zoom • Motion Detection 	4 MP Static <ul style="list-style-type: none"> • 1080P Video • 130° Horizontal Field of View • 73° Vertical Field of View • Motion Detection 	8 MP Static <ul style="list-style-type: none"> • 4K Video • 109° Horizontal Field of View • 57° Vertical Field of View • 3.5x Optical Zoom • Motion Detection 	<ul style="list-style-type: none"> • UL Certified • Five Diamond Certified • TMA Member • USA-Based Support
Rental and Purchase Options				<p>\$95 monthly service charge per camera</p> <p>\$225 per camera for hardware supporting Builder's Risk requirements</p> <p>Solar costs may vary</p>

Hardware that Supports Common Builder's Risk Requirements

110V AC EQUIPMENT	SOLAR EQUIPMENT
<ul style="list-style-type: none"> • 24 hour battery backup • Battery failover alert • Sirens and strobe lighting • Talk down speaker • Tamper-proof switch 	<ul style="list-style-type: none"> • Built-in 5-day battery backup • Sirens and strobe lighting • Talk down speaker • Tamper-proof switch

Secure Your Projects. Request a Quote or Demo.

Call: 888-849-2583

Email: zwell@oxblue.com

OxBlue, part of Hexagon, is a leading global provider of construction time-lapse and live streaming video camera services. Since 2001, OxBlue's helped owners, general contractors and industry professionals capture, understand and share construction progress with ease. Based in Atlanta, Georgia, OxBlue operates across the world in 45 different countries and all 50 states.